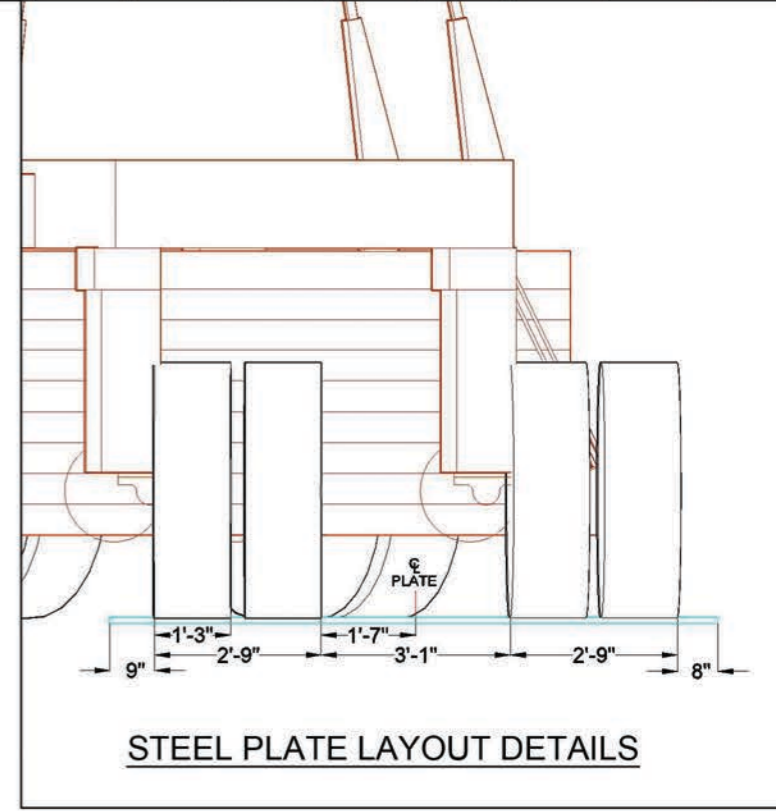
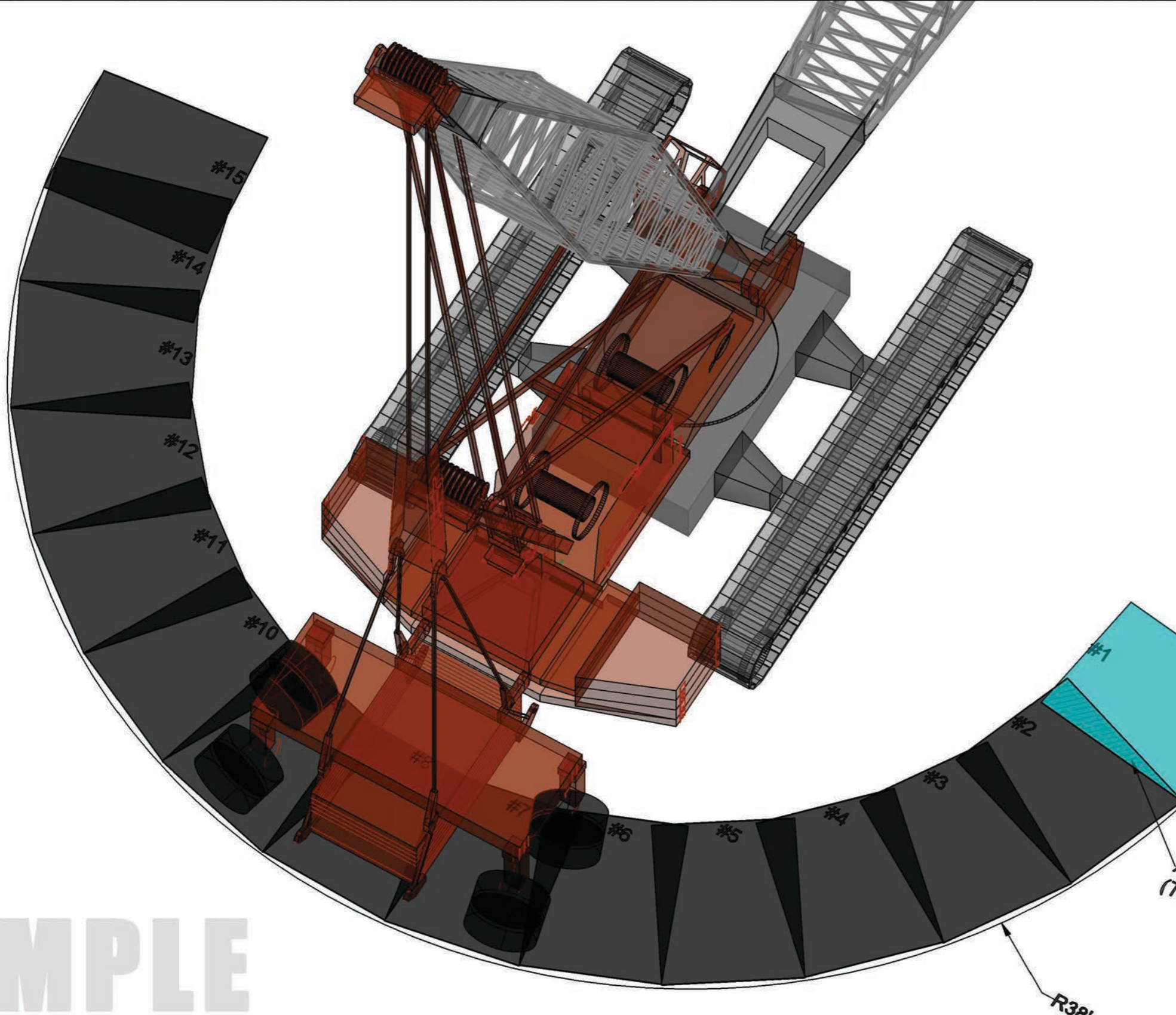


# SAMPLE



#1  
#2  
#3  
#4  
#5  
#6  
#7  
#8  
#9  
#10  
#11  
#12  
#13  
#14  
#15

R38'

8'x10'x1" THICK STEEL PLATE (TYP.)

AREA = 10.4 SF (TYP. ON OVERLAPS)

GENERAL NOTES:  
1. SHEET SIZES AND LAYOUT SHALL NOT BE MODIFIED UNLESS APPROVED BY NESS AND CAMPBELL CRANE, INC.

REV #	REVISIONS	DATE	REV BY.	CHK BY.
1.	MODIFIED SHEET LAYOUT CONFIGURATION.	8/12/14	M.A.	M.A.



OFFICES:  
SEATTLE DIVISION - 1821 180TH STREET S.E.  
BOTHELL, WA. 98031 (206) 784 - 1054  
PORTLAND DIVISION - 5730 NE 138TH AVE.  
PORTLAND, OR. 97320, 503-283-3111

DISCLOSURE:  
THIS DOCUMENT IS THE PROPERTY OF NESS AND CAMPBELL CRANE, INC. THIS DOCUMENT SHALL NOT BE REPRODUCED, COPIED, DISCLOSED TO OTHERS, OR USED FOR ANY PURPOSE OTHER THAN THAT FOR WHICH IT WAS SPECIFICALLY FURNISHED WITHOUT THE PRIOR WRITTEN CONSENT OF NESS AND CAMPBELL CRANE, INC.

TITLE:  
MAX-ER 225 CRIBBING DETAILS

PROJECT:  
BOEING EVERETT - NEW 40-27 BUILDING

CUSTOMER:  
HOFFMAN CONSTRUCTION

DESCRIPTION:  
MAX-ER 225 CRIBBING DETAILS

DATE:  
7/15/2014

DRAWN BY:  
M.A.

APPROVED BY:  
M.A.

SCALE:  
N.T.S.

SHEET #  
1 OF 1