

CONVENTIONAL CRANE 308 TONS

DEMAG TC 1200

BOOM LENGTHS:
39 TO 295 FT

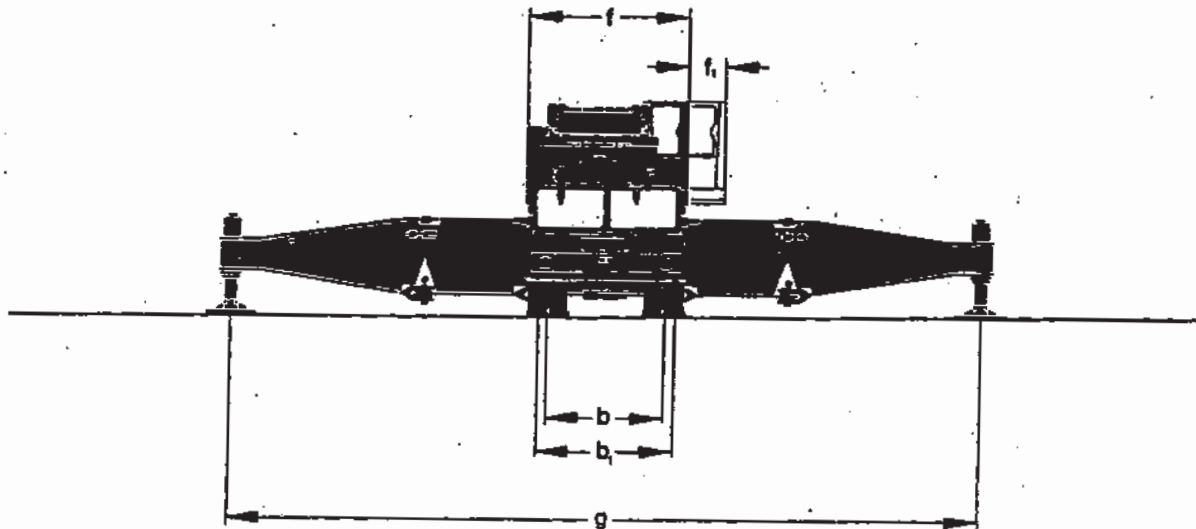
JIB LENGTHS:
59 TO 216 FT

JIB OFFSETS:
LUFFING



NOTES:

DEMAG Baumaschinen 308 Ton Cap.



a	14.00 - 24, PR 22	d	54' 9" (16 710 mm)	e ₄	3' (1 150 mm)	k	61' 4" (18 700 mm)
a ₁	12.00 - 24, PR 20	d ₁	62' 2" (18 950 mm)	f	9' 10" (3 000 mm)	l	7' 2" (2 200 mm)
b	7' 1" (2 170 mm*)	e	8' (2 450 mm)	f ₁	2' 4" (700 mm)	m	22' (6 710 mm)
b ₁	8' 5" (2 503 mm)	e ₁	5' 3" (1 600 mm)	g	39' 4" (12 000 mm)	n	10" (250 mm)
c	13' 9" (4 200 mm)	e ₂	4' 11" (1 500 mm)	h	12' 11" (3 950 mm)	o	8" (150 mm)
c ₁	30' (9 150 mm)	e ₃	17' 8" (5 400 mm)	i	11' 2" (3 600 mm)		

* 4th Front Axle

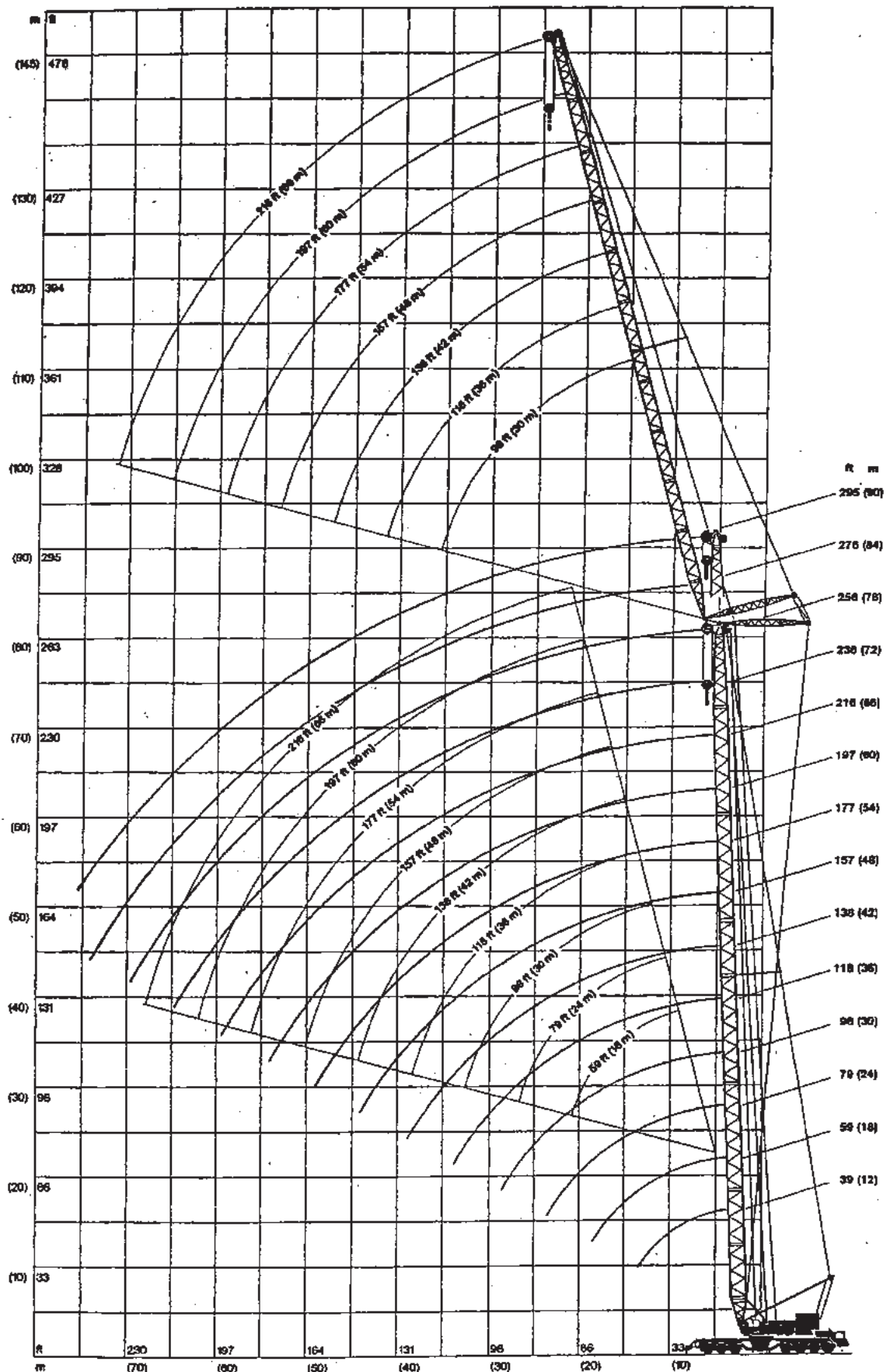
Truck Carrier

Engine	KHD BF 12 L 413
System	12 cyl.-4 strokes
Output at 2500 RPM	310 kW (420 HP)
Cooling	air
Fuel-Tank Capacity	80 gal. (300 liters)
Transmission	12-Speed Main Transmission plus 2-Speed Transfer Case
Carrier	14 x 8
Suspension	
Front	1st and 2nd Axles: Leaf springs; 3rd and 4 th = Hydraulic suspension
Rear	1st and 2nd Axles = Walking Beams, 3rd = Hydraulic suspension
Outriggers	4 articulated dismountable outrigger beams with hydraulic jack legs



PORTLAND OFFICE: 503.283.3111
SEATTLE OFFICE: 206.784.1054
WWW.NESSCAMPBELL.COM

DEMAG Baumaschinen 308 Ton Cap.



PORTLAND OFFICE: 503.283.3111
 SEATTLE OFFICE: 206.784.1054
WWW.NESSCAMPBELL.COM

TC 1200

O/R SPREAD
39'-4.4" SQ.
(12 x 12 m)

85 %

360°

CAPACITIES (POUNDS) = LOAD + HOOK BLOCK

MAIN BOOM ONLY (FT.)

99 TON CWT.

	RADIUS (FT.)	85 % RATED		RADIUS (FT.)	85 % RATED	
BOOM LENGTH (FT.) 197			BOOM LENGTH (FT.) 216			
	33	291,000		33	238,000	
	36	278,000		36	225,000	
	40	264,000		40	214,000	
	46	240,000		46	201,000	
	53	209,000		53	190,000	
	59	184,000		59	182,000	
	66	161,000		66	160,000	
	All capacities above the parting line are based on structural strength, those below the line are based on stability for the percentage of tipping load as indicated.	72		144,600	72	143,000
		79		129,600	79	128,000
85		118,000	85	116,400		
92		107,000	92	105,600		
98		99,000	98	97,000		
110		84,000	110	82,400		
125		69,600	125	68,000		
140		58,000	140	58,000		
	150	52,800		150	52,000	
	165	45,000		165	43,600	
	180	40,000		180	38,000	
			8-29-01	190	35,000	
			4/6			
			A179			



PORTLAND OFFICE: 503.283.3111
SEATTLE OFFICE: 206.784.1054
WWW.NESSCAMPBELL.COM

TC 1200

O/R SPREAD
39'-4.4" SQ.
(12 x 12 m)

85 %

360°

CAPACITIES (POUNDS) = LOAD + HOOK BLOCK

MAIN BOOM ONLY (FT.)

99 TON CWT.

BOOM LENGTH (FT.)	RADIUS	85 %	BOOM LENGTH (FT.)	RADIUS	85 %
	(FT.)	RATED		(FT.)	RATED
236	33	194,000	256	33	163,000
	36	187,200		36	156,600
	40	182,600		40	151,000
	46	171,800		46	141,600
	53	162,000		53	111,400
	59	154,000		59	124,600
	66	143,000		66	116,000
	72	138,400		72	110,200
	79	127,000		79	103,400
	85	115,000		85	98,400
All capacities above the parting line are based on structural strength, those below the line are based on stability for the percentage of tipping load as indicated.	92	104,000	92	92,600	
	98	95,000	98	88,000	
	110	82,000	110	79,000	
	125	67,000	125	66,000	
	140	56,000	140	55,000	
	150	50,000	150	49,000	
	165	42,600	165	41,000	
	180	36,000	180	35,000	
	190	33,000	190	32,000	
	205	29,000	205	27,600	
			220	24,000	
			230	22,000	

8-29-01
5/6
A179



PORTLAND OFFICE: 503.283.3111
SEATTLE OFFICE: 206.784.1054
WWW.NESSCAMPBELL.COM

TC 1200

O/R SPREAD
39'-4.4" SQ.
(12 x 12 m)

85 %

360°

CAPACITIES (POUNDS) = LOAD + HOOK BLOCK

MAIN BOOM ONLY (FT.)

99 TON CWT.

	RADIUS	85 %		RADIUS	85 %
	(FT.)	RATED		(FT.)	RATED
BOOM LENGTH (FT.) 276			BOOM LENGTH (FT.) 295		
	36	132,400		36	116,800
	40	125,000		40	108,400
	46	116,000		46	101,400
	53	107,600		53	92,000
	59	100,200		59	84,800
	66	93,600		66	78,000
	72	88,000		72	73,400
	79	82,000		79	68,000
	85	77,600		85	64,000
All capacities above the parting line are based on structural strength, those below the line are based on stability for the percentage of tipping load as indicated.	92	73,200	92	59,000	
	98	69,600	98	56,000	
	110	62,000	110	49,600	
	125	55,600	125	43,000	
	140	49,000	140	36,400	
	150	45,400	150	34,000	
	165	40,600	165	31,200	
	180	34,000	180	26,000	
	190	30,600	190	23,400	
	205	26,000	205	20,200	
	220	23,000	220	17,000	
	230	20,400	230	15,600	
			2-29-01		
			6/6		
			A140		



PORTLAND OFFICE: 503.283.3111
SEATTLE OFFICE: 206.784.1054
WWW.NESSCAMPBELL.COM

75 %

TC 1200

LUFFING FLY JIB
ANGLE OF MAIN BOOM 88°

360°

39'-4.4"
(12 x 12 m)

RADIUS
(FT.)

CAPACITIES (POUNDS) = LOAD + HOOK BLOCK

MAIN BOOM (FT.) 99 TON CWT.

98'-5.1" (30m)

JIB (FT.)

59'-1"	78'-9"	98'-5"	118'-1"	137'-9"	157'-6"	177'-2"	196'-10"	216'-6"
--------	--------	--------	---------	---------	---------	---------	----------	---------

32'-10"	220,000							
38'-4"	207,000	180,400						
45'-11"	195,400	170,200	143,600	113,200				
52'-6"	185,800	160,000	137,400	110,600	88,200			
59'-1"	160,600	150,600	131,400	108,000	87,400	67,600		
65'-7"	139,200	143,200	126,000	105,000	86,600	66,600	50,400	
72'-7"		126,800	120,600	102,200	85,800	65,000	49,800	41,400
78'-9"		112,800	111,600	99,400	84,600	63,800	48,600	40,200
85'-0"		101,800	100,400	96,200	83,800	62,400	47,400	38,800
91'-10"			91,200	90,400	82,600	61,000	46,600	37,800
98'-5"			83,600	82,400	81,400	60,000	45,400	36,600
111'-7"				70,400	69,000	57,200	43,200	34,200
124'-8"				61,000	59,800	54,400	41,000	32,000
137'-9"					52,800	51,800	40,200	29,600
150'-11"						46,200	37,000	27,600
164'-0"						41,400	34,800	25,800
177'-2"							33,000	24,400
190'-3"								22,800
203'-5"								21,400
216'-6"								14,200
229'-8"								
242'-9"								
255'-11"								

7-8-01

3/11
A150

195652 40 2

75 %	TC 1200 LUFFING FLY JIB ANGLE OF MAIN BOOM 88°	360° 39'-4.4" (12 x 12 m)
------	---	--

RADIUS (FT)	CAPACITIES (POUNDS) = LOAD + HOOK BLOCK									
	MAIN BOOM (FT.) 99 TON CWT.									
	118'-1.3" (36m)									
	JIB (FT.)									
	59'-1"	78'-9"	98'-5"	118'-1"	137'-9"	157'-6"	177'-2"	196'-10"	216'-6"	
32'-10"	199,200									
39'-4"	190,600	166,400								
45'-11"	181,000	158,400	132,000							
52'-6"	171,800	148,200	127,200	103,000	82,600					
59'-1"	163,200	140,800	122,400	100,800	82,000	64,400				
65'-7"	141,200	133,800	117,800	98,400	81,400	63,200	49,600			
72'-7"	124,200	126,400	113,800	95,800	80,200	62,200	48,800	40,000	32,400	
78'-9"		112,600	109,000	93,400	79,400	61,200	47,800	38,800	31,600	
85'-0"		101,400	100,000	90,800	78,400	60,000	46,800	38,000	30,400	
91'-10"			90,800	88,000	77,400	58,800	45,800	36,800	29,600	
98'-5"			83,000	82,200	76,000	58,000	44,800	36,000	28,600	
111'-7"				69,800	68,800	55,600	43,000	34,000	24,800	
124'-8"				60,800	59,600	53,600	41,200	32,000	22,800	
137'-9"					52,200	51,400	39,200	30,000	20,800	
150'-11"						45,600	37,400	28,000	18,800	
164'-0"						41,000	35,400	24,400	16,800	
177'-2"							33,400	22,800	15,400	
190'-3"								21,400	14,200	
203'-5"										
216'-6"										
229'-8"										
242'-9"										
255'-11"										
										7-8-01
										4/11
										A150
							195652 40 2			



PORTLAND OFFICE: 503.283.3111
 SEATTLE OFFICE: 206.784.1054
WWW.NESSCAMPBELL.COM

75 %	TC 1200 LUFFING FLY JIB ANGLE OF MAIN BOOM 88°	360°
		39'-4.4" (12 x 12 m)

RADIUS (FT)	CAPACITIES (POUNDS) = LOAD + HOOK BLOCK								
	MAIN BOOM (FT.) 99 TON CWT.								
	137'-9.5" (42m)								
	JIB (FT.)								
	59'-1"	78'-9"	98'-5"	118'-1"	137'-9"	157'-6"	177'-2"	196'-10"	216'-6"
32'-10"									
39'-4"		149,600							
45'-11"		143,200	119,800						
52'-6"		137,000	116,000	95,200	76,400				
59'-1"		131,000	112,400	93,400	75,800	60,600			
65'-7"		125,800	108,600	91,400	75,000	60,000	47,800		
72'-7"		120,200	105,000	89,200	74,000	58,800	47,200	38,000	29,600
78'-9"		112,600	101,800	87,400	73,000	58,000	46,600	37,400	28,800
85'-0"		101,400	98,200	85,200	72,200	57,200	45,800	36,200	27,600
91'-10"		92,000	91,000	83,000	71,200	56,400	45,200	35,400	26,600
98'-5"			83,200	80,800	70,000	55,600	44,400	34,400	24,600
111'-7"				70,000	67,800	53,600	42,600	33,000	23,000
124'-8"				61,000	60,000	52,000	40,600	31,000	21,200
137'-9"					52,800	50,200	39,000	29,400	19,800
150'-11"						48,400	37,400	27,600	18,400
164'-0"						46,400	35,200	26,400	17,000
177'-2"							33,200	25,000	16,000
190'-3"								24,200	14,600
203'-5"								23,000	13,400
216'-6"									
229'-8"									
242'-9"									
255'-11"									
									7-8-01
									5/11
									A150
						195652 40 3			

75 %

TC 1200

LUFFING FLY JIB
ANGLE OF MAIN BOOM 88°

360°

39'-4.4"
(12 x 12 m)

RADIUS (FT)	CAPACITIES (POUNDS) = LOAD + HOOK BLOCK								
	MAIN BOOM (FT.) 99 TON CWT.								
	157'-5.7" (48m)								
	JIB (FT.)								
	59'-1"	78'-9"	98'-5"	118'-1"	137'-9"	157'-6"	177'-2"	196'-10"	216'-6"
32'-10"									
39'-4"		134,200							
45'-11"		129,000	108,800						
52'-6"		123,800	106,000	87,000					
59'-1"		119,000	102,800	85,200	69,400	57,200			
65'-7"		114,400	99,800	83,800	68,800	56,400	45,200		
72'-7"		110,000	97,000	82,000	68,200	55,600	45,000	35,800	
78'-9"		105,600	93,800	80,200	67,200	55,200	44,600	35,200	27,600
85'-0"		101,400	91,000	78,400	66,400	54,400	44,200	34,200	27,000
91'-10"		92,000	88,200	76,600	65,400	53,800	43,600	33,600	26,000
98'-5"			83,000	75,000	64,600	53,200	42,800	33,000	25,000
111'-7"			71,000	69,800	62,400	51,600	41,800	31,600	23,800
124'-8"				60,600	59,600	50,000	40,200	30,200	22,600
137'-9"					52,400	48,000	38,400	29,000	21,200
150'-11"						46,200	36,600	27,400	20,000
164'-0"						41,200	34,800	26,000	18,600
177'-2"							33,000	24,600	17,200
190'-3"								23,000	16,000
203'-5"								21,400	14,600
216'-6"									13,400
229'-8"									
242'-9"									
255'-11"									
									7-8-01
									6/11
									A150
						195652 40 3			



PORTLAND OFFICE: 503.283.3111
SEATTLE OFFICE: 206.784.1054
WWW.NESSCAMPBELL.COM

75 %	TC 1200 LUFFING FLY JIB ANGLE OF MAIN BOOM 88°	360° 39'-4.4" (12 x 12 m)
------	---	--

RADIUS (FT)	CAPACITIES (POUNDS) = LOAD + HOOK BLOCK								
	MAIN BOOM (FT.) 99 TON CWT.								
	177'-2" (54m)								
	JIB (FT.)								
	59'-1"	78'-9"	98'-5"	118'-1"	137'-9"	157'-6"	177'-2"	196'-10"	216'-6"
32'-10"									
39'-4"		124,000							
45'-11"		120,200	100,000						
52'-6"		116,800	97,800	81,800					
59'-1"		113,200	95,600	80,200	64,400	53,000			
65'-7"		109,600	93,600	78,800	63,400	52,400	42,200		
72'-7"		106,200	91,400	77,600	62,800	51,800	41,800	33,800	
78'-9"		102,600	89,000	76,000	62,400	51,200	41,200	33,400	27,000
85'-0"		99,200	87,200	74,400	61,600	50,800	40,800	33,200	26,600
91'-10"		91,800	84,800	73,200	60,800	50,200	40,600	32,600	25,800
98'-5"			82,400	71,800	60,200	49,600	40,000	32,200	25,200
111'-7"			70,800	69,800	58,400	48,600	39,600	31,400	24,600
124'-8"				60,800	56,600	47,400	38,600	30,400	23,400
137'-9"					52,400	46,200	38,000	29,400	22,200
150'-11"						43,600	36,600	28,200	20,800
164'-0"						41,200	35,600	27,200	19,800
177'-2"							34,000	25,800	18,400
190'-3"								24,400	17,000
203'-5"								22,800	15,800
216'-6"									14,400
229'-8"									
242'-9"									
255'-11"									
									7-8-01
									7/11
									A150
						195652 40 4			



75 %	TC 1200 LUFFING FLY JIB ANGLE OF MAIN BOOM 88°	360° 39'-4.4" (12 x 12 m)
------	---	--

RADIUS (FT)	CAPACITIES (POUNDS) = LOAD + HOOK BLOCK								
	MAIN BOOM (FT.)						99 TON CWT.		
	255'-10.9" (78m)								
	JIB (FT.)								
	59'-1"	78'-9"	98'-5"	118'-1"	137'-9"	157'-6"	177'-2"	196'-10"	216'-6"
32'-10"									
39'-4"									
45'-11"									
52'-6"			54,400	47,600					
59'-1"			54,200	47,000	39,600				
65'-7"			53,800	46,400	39,000	32,000			
72'-7"			53,400	46,200	38,600	31,800	26,600	22,000	
78'-9"			52,800	45,600	38,200	31,600	26,600	21,600	18,000
85'-0"			52,000	45,400	38,000	31,600	26,400	21,400	18,000
91'-10"			51,400	45,000	37,600	31,400	26,000	21,200	17,800
98'-5"			49,800	44,200	37,400	31,400	25,800	21,000	17,600
111'-7"			48,400	43,000	36,400	31,200	25,800	20,800	17,200
124'-8"				41,200	35,600	30,800	25,600	20,600	17,000
137'-9"					34,000	30,000	25,400	20,400	17,000
150'-11"					32,600	29,200	24,800	20,200	16,800
164'-0"						28,000	24,200	20,000	16,600
177'-2"							23,200	19,200	16,200
190'-3"							22,400	18,800	15,800
203'-5"								18,000	14,800
216'-6"									14,000
229'-8"									
242'-9"									
255'-11"									
									7-B-01
									11/11
									A150
						195652 40 6			

THIS INFORMATION IS FOR REFERENCE USE ONLY. OPERATORS MANUALS SHOULD BE CONSULTED AND ADHERED TO. PLEASE CONTACT NESS CAMPBELL AT INFO@NESSCAMPBELL.COM FOR FURTHER INFORMATION.