



# ROUGH TERRAIN CRANE

## 130 TONS

LINK-BELT RTC-80130ii

**BOOM LENGTHS:**  
41 TO 162 FT

**JIB LENGTHS:**  
31 TO 109 FT

**JIB OFFSETS:**  
2 - 15 - 30 - 45



# NOTES:

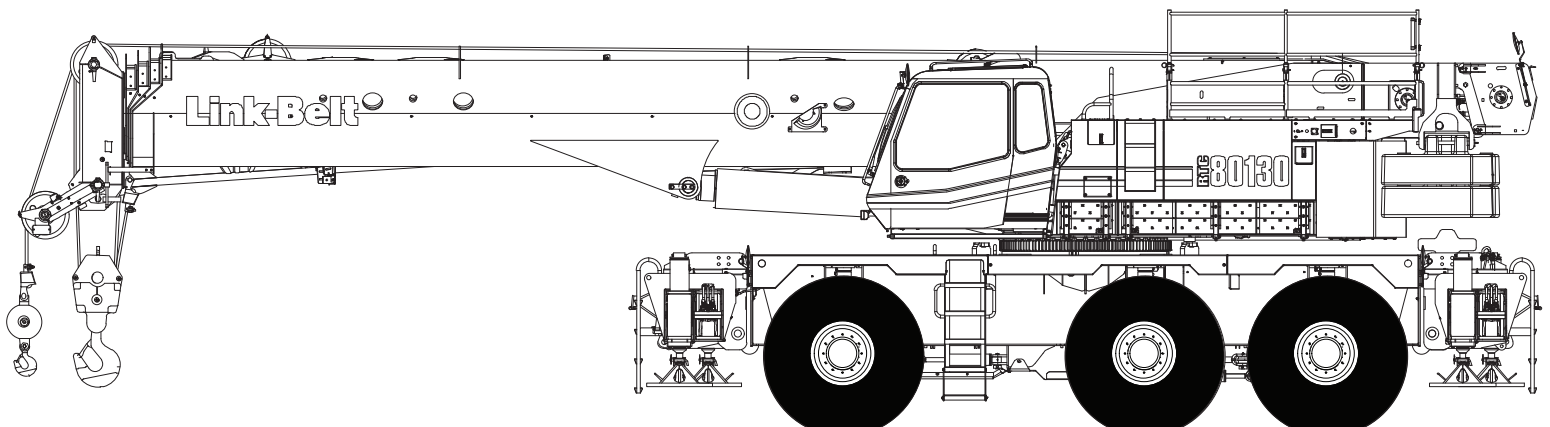
# Technical Data

## Specifications & Capacities

# RTG 80130

**Series II**

130 US ton  
120 metric ton



**CAUTION:** This material is supplied for reference use only. Operator must refer to in-cab Crane Rating Manual and Operator's Manual to determine allowable crane lifting capacities and assembly and operating procedures.



PORTLAND OFFICE: 503.283.3111  
SEATTLE OFFICE: 206.784.1054  
[WWW.NESSCAMPBELL.COM](http://WWW.NESSCAMPBELL.COM)

# Boom, Attachments, and Upper Structure

## ■ Boom

Design - Five section, formed construction of extra high tensile steel consisting of one base section and four telescoping sections. The two plate design of each section has multiple longitudinal bends for superior strength. Each telescoping section extends independently by means of one double-acting, single stage hydraulic cylinder with integral holding valves.

### Boom

- 41.4-162 ft ( 12.6-49.3m ) five section boom
- Five boom extend modes (EM1 through EM5), controlled from the operator's cab, provide superior capacities by varying the extension of the telescoping sections:
  - EM1 extends to 162.0 ft ( 49.3m )
  - EM2 extends to 150.0 ft ( 45.7m )
  - EM3 extends to 124.7 ft ( 38.0m )
  - EM4 extends to 112.0 ft ( 34.1m )
  - EM5 extends to 86.2 ft ( 26.3m )
- Mechanical boom angle indicator
- Maximum tip height for each extend mode is:
  - EM1 is 171 ft ( 52.1m )
  - EM2 is 159 ft ( 48.5m )
  - EM3 is 134 ft ( 40.8m )
  - EM4 is 122 ft ( 37.2m )
  - EM5 is 96 ft ( 29.3m )

### Boom Wear Pads

- Wear pads with Teflon inserts that self-lubricate the boom sections
- Bottom wear pads are universal for all telescoping boom sections
- Bottom wear pads are universal for the boom base section
- Top wear pads are universal for all boom sections

### Boom Head

- Six 16.38 in ( 41.6cm ) root diameter nylon sheaves to handle up to twelve parts of line
- Easily removable wire rope guards
- Rope dead end lugs on each side of the boom head
- Boom head is designed for quick-reeve of the hook block

### Boom Elevation

- One double acting hydraulic cylinder with integral holding valve
- Boom elevation:  $-2.5^{\circ}$  to  $80^{\circ}$

### Auxiliary Lifting Sheave - Optional

- Single 16.38 in ( 41.6cm ) root diameter nylon sheave
- Easily removable wire rope guards
- Does not affect erection of the fly or use of the main head sheaves

### Hook Blocks and Balls - Optional

- 140 ton ( 127.0mt ) 7 sheave, quick-reeve hook block with safety latch
- 100 ton ( 90.7mt ) 6 sheave, quick-reeve hook block with safety latch
- 80 ton ( 72.5mt ) 5 sheave, quick-reeve hook block with safety latch
- 50 ton ( 45.36mt ) 4 sheave, quick-reeve hook block with safety latch
- 35 ton ( 31.7mt ) 1 sheave, quick-reeve hook block with safety latch
- 12 ton ( 10.8mt ) hook ball (swivel) with safety latch

### Fly - Optional

- 31 ft-55 ft ( 9.4-16.8m ) two piece bi-fold lattice fly, stowable, offsettable to  $2^{\circ}$ ,  $15^{\circ}$ ,  $30^{\circ}$ , and  $45^{\circ}$ . Maximum tip height is 225 ft ( 68.6m ).
- 10 ft, 31 ft - 55 ft ( 3.0, 9.4-16.8m ) three piece bi-fold lattice fly, stowable, offsettable to  $2^{\circ}$ ,  $15^{\circ}$ ,  $30^{\circ}$ , and  $45^{\circ}$ . Maximum tip height is 225 ft ( 68.6m ).
- 10 ft, 31 ft - 55 ft ( 3.0, 9.4-16.8m ) three piece bi-fold lattice fly, stowable, hydraulically offsettable from  $2^{\circ}$  through  $45^{\circ}$ . Maximum tip height is 225 ft ( 68.6m ).

### Fly Extensions - Optional

- One 18 ft ( 5.5m ) lattice extension, equipped with two 16.38 in ( 41.6cm ) root diameter nylon sheaves, to be mounted between the boom head and fly options. Maximum tip height is 243 ft ( 74.1m ). Minimum of 26,000 lb ( 11 794kg ) of counterweight required.
- Two 18 ft ( 5.5m ) lattice extensions, one equipped with two 16.38 in ( 41.6cm ) root diameter nylon sheaves, to be mounted between the boom head and fly options. Maximum tip height is 260 ft ( 79.2m ). Minimum of 26,000 lb ( 11 794kg ) of counterweight required.
- Three 18 ft ( 5.5m ) lattice extensions, one equipped with two 16.38 in ( 41.6cm ) root diameter nylon sheaves, to be mounted between the boom head and fly options. Maximum tip height is 278 ft ( 84.7m ). Minimum of 29,000 lb ( 13 154kg ) of counterweight required.



PORTLAND OFFICE: 503.283.3111  
SEATTLE OFFICE: 206.784.1054  
[WWW.NESSCAMPBELL.COM](http://WWW.NESSCAMPBELL.COM)

# Load Hoist System

## Load Hoist Performance

| Main (Front) and Auxiliary (Rear) Winches - 7/8 in ( 22mm ) Rope |                   |       |                   |       |                 |       |       |      |       |       |
|--|-------------------|-------|-------------------|-------|-----------------|-------|-------|------|-------|-------|
| Layer  | Maximum Line Pull |       | Normal Line Speed |       | High Line Speed |       | Layer |      | Total |       |
|  | lb                | kN    | ft/min            | m/min | ft/min          | m/min | ft    | m    | ft    | m     |
| 1  | 21,022            | 93.51 | 141               | 43.0  | 279             | 85.0  | 125   | 38.1 | 125   | 38.1  |
| 2  | 18,968            | 84.37 | 156               | 47.5  | 310             | 94.5  | 138   | 42.0 | 263   | 80.2  |
| 3  | 17,280            | 76.86 | 172               | 52.4  | 340             | 103.6 | 152   | 46.3 | 415   | 126.5 |
| 4  | 15,868            | 70.58 | 187               | 57.0  | 370             | 112.8 | 165   | 50.3 | 588   | 179.2 |
| 5  | 14,669            | 65.25 | 202               | 61.6  | 400             | 121.9 | 179   | 54.6 | 759   | 231.3 |
| 6  | 13,639            | 60.67 | 217               | 66.1  | 431             | 131.4 | 192   | 58.5 | 951   | 289.9 |

| Wire Rope Application  |          | Diameter |    | Type   | Maximum Permissible Load |          |
|------------------------|----------|----------|----|--|--------------------------|----------|
|                        |          | in       | mm |  | lb                       | kg       |
| Main (Front) Winch     | Standard | 7/8      | 22 | 18x19 rotation resistant - right regular lay (Type RB) | 17,520                   | 7 946.9  |
|                        | Optional | 7/8      | 22 | 4 strand, low torque - right regular lay (Type GC)     | 30,285                   | 13 737.0 |
|                        | Optional | 7/8      | 22 | 36x7 rotation resistant - right regular lay (Type ZB)  | 20,920                   | 9 489.2  |
| Auxiliary (Rear) Winch | Standard | 7/8      | 22 | 18x19 rotation resistant - right regular lay (Type RB) | 17,520                   | 7 946.9  |
|                        | Optional | 7/8      | 22 | 4 strand, low torque - right regular lay (Type GC)     | 30,285                   | 13 737.0 |
|                        | Optional | 7/8      | 22 | 36x7 rotation resistant - right regular lay (Type ZB)  | 20,920                   | 9 489.2  |

### 2M Main (Front) and Optional Auxiliary (Rear) Winches

- Axial piston, full and half displacement (2-speed) motors driven through planetary reduction unit for positive control under all load conditions.
- Grooved lagging
- Power up/down mode of operation
- Hoist drum cable follower - optional
- Drum rotation indicator
- Drum diameter: 15 in ( 38.1cm )
- Rope length:
  - Main (Front): 850 ft ( 259.0m )
  - Auxiliary (Rear): 600 ft ( 182.8m ) or 850 ft ( 259.0m )
- Maximum rope storage: 951 ft ( 289.9m )
- Terminator style socket and wedge

### Engine

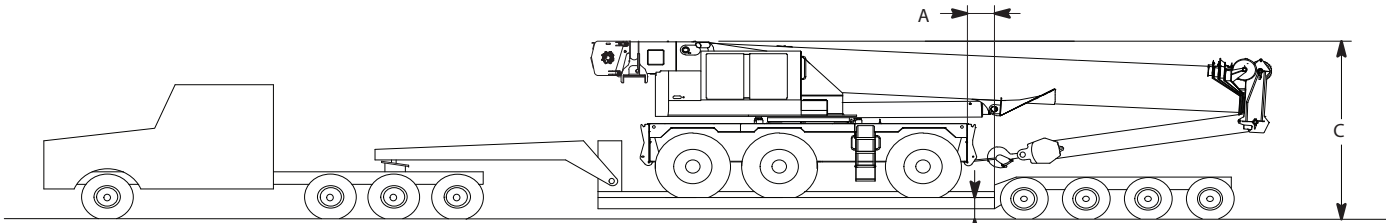
| Specification                            | Cummins QSL                       |                                  |
|--|-----------------------------------|----------------------------------|
| Numbers of Cylinders                     | 6                                 | 6                                |
| Cycle                                    | 4                                 | 4                                |
| Emissions Compliance Level:              | Tier 4i/Stage IIIB <sup>(1)</sup> | Tier 3/Stage IIIA <sup>(2)</sup> |
| Bore and Stroke: inch ( mm)              | 4.49 x 5.69 ( 114 x 145)          | 4.49 x 5.69 ( 114 x 145)         |
| Piston Displacement: in <sup>3</sup> (L) | 543 ( 8.90)                       | 543 ( 8.90)                      |
| Max. Brake Horsepower: hp ( kW)          | 340 ( 254) @ 1,900 rpm            | 350 ( 261) @ 1,900 rpm           |
|  | 320 ( 239) @ 2,100 rpm            | 325 ( 242) @ 2,100 rpm           |
| Peak Torque: ft lb (Nm)                  | 1,050 ( 1 424) @ 1,500 rpm        | 1,050 ( 1 424) @ 1,500 rpm       |
| Electric/starting systems: volts         | 12/12                             | 12/12                            |
| Alternator: amps                         | 160                               | 160                              |
| Crankcase Capacity: qt (L)               | 24 ( 22.7)                        | 24 ( 22.7)                       |

- Water/fuel separator w/ heater and water in fuel (WIF) sensor
- 120-volt block heater-Tier 4i/Stage IIIB
- 220-volt block heater-Tier 3/Stage IIIA
- Grid heater - 200 amp
- <sup>(1)</sup> Can only be sold and/or operated where Tier 4i and Stage IIIB off-highway emission standards are accepted.
- <sup>(2)</sup> Can only be sold and/or operated where Tier 3 and Stage IIIA off-highway emission standards are accepted.



PORTLAND OFFICE: 503.283.3111  
 SEATTLE OFFICE: 206.784.1054  
[WWW.NESSCAMPBELL.COM](http://WWW.NESSCAMPBELL.COM)

# Transport Configuration and Weights



- Crane Weight: 94,142 lb ( 42 702kg ), equipped with :
- 41.4-162 ft ( 12.6-49.3m ), five section boom
  - 80 ton ( 72.57mt) hook block
  - Main winch with 850 ft ( 259.1m ) of 7/8 in ( 22mm) rope
  - Auxiliary winch with 600 ft ( 182.8m ) of 7/8 in ( 22mm) rope
  - 10-31-55 ft ( 3.0-9.4-16.7m ) offsettable, three piece bi-fold fly
  - Hoist drum followers - Main and Auxiliary
  - Auxiliary lifting sheave
  - Air conditioning
  - Hydraulic outrigger pin removal

Drop Off Load Weight: 45,196 lb ( 20 501kg )

- Two outrigger boxes with tow shackles
- 27,000 lb (12 247 kg) counterweight
- 12 ton ( 10.9mt) hook ball

## Axle Group Weights

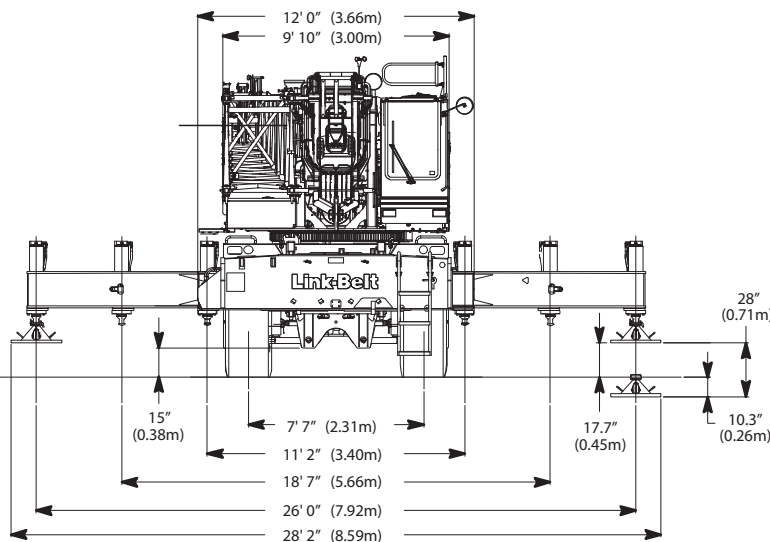
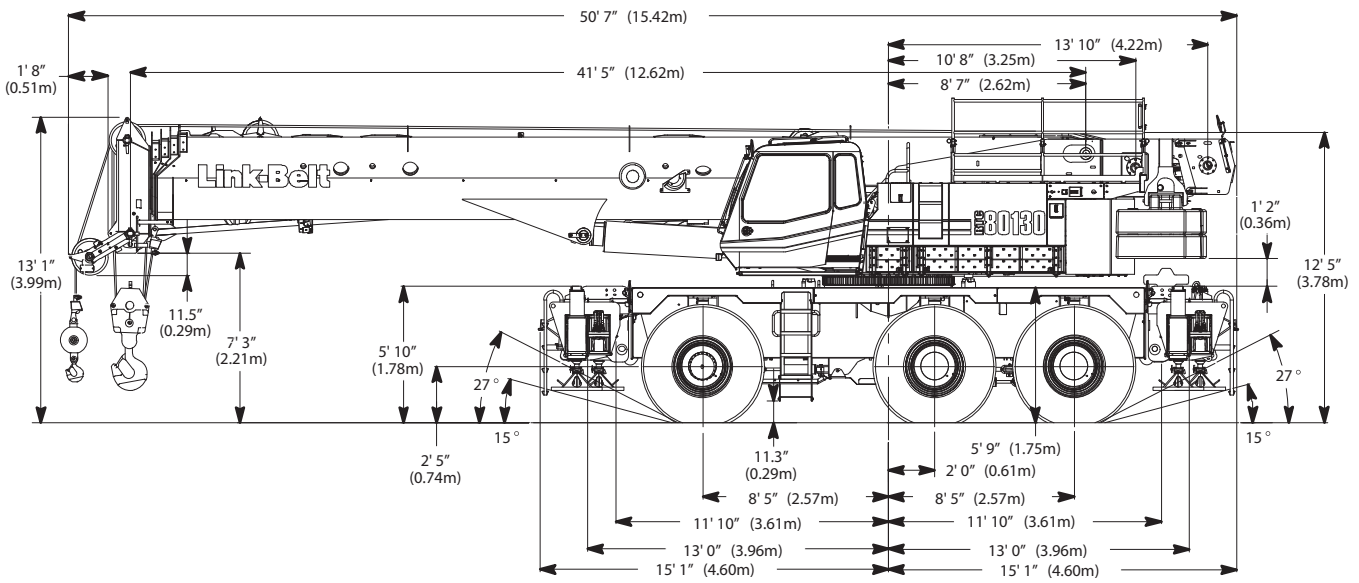
| Empty Truck Wt.         | Bed Length        | Steer                   | Drivers                  | Trailer                  | A                 |
|-------------------------|-------------------|-------------------------|--------------------------|--------------------------|-------------------|
| 48,500 lb<br>(22 000kg) | 25 ft<br>( 7.62m) | 12,500 lb<br>( 5 670kg) | 59,781 lb<br>( 27 116kg) | 70,361 lb<br>( 31 915kg) | 5 in<br>( 12.7cm) |

B - 18 in ( 0.46m) or 24 in ( 0.61m)

|                                 | Normal Suspension    | Collapsed Suspension |
|---------------------------------|----------------------|----------------------|
| C [with 18 in ( 0.46m) Trailer] | 13 ft 11 in ( 4.24m) | 13 ft 8 in ( 4.16m)  |
| C [with 24 in ( 0.61m) Trailer] | 14 ft 5 in ( 4.39m)  | 14 ft 2 in ( 4.32m)  |

\*Wing weights 7,000 lb ( 6 350kg ) each require additional truck.

# General Dimensions



| Turning Radius - 2 Wheel Steering | English | Metric |
|-----------------------------------|---------|--------|
| Wall to wall over carrier         | 44' 10" | 13.67m |
| Wall to wall over boom attachment | 56' 1"  | 17.09m |
| Curb to curb                      | 41' 5"  | 12.62m |
| Centerline of tire                | 40' 4"  | 12.29m |

| Turning Radius - 6 Wheel Steering | English | Metric |
|-----------------------------------|---------|--------|
| Wall to wall over carrier         | 25' 5"  | 7.75m  |
| Wall to wall over boom attachment | 38' 10" | 11.84m |
| Curb to curb                      | 21' 10" | 6.66m  |
| Centerline of tire                | 20' 9"  | 6.32m  |

| Tail Swing                             | English | Metric |
|--|---------|--------|
| of counterweight (w/o auxiliary winch) | 13' 9"  | 3.90m  |
| of auxiliary winch                     | 15' 1"  | 4.60m  |

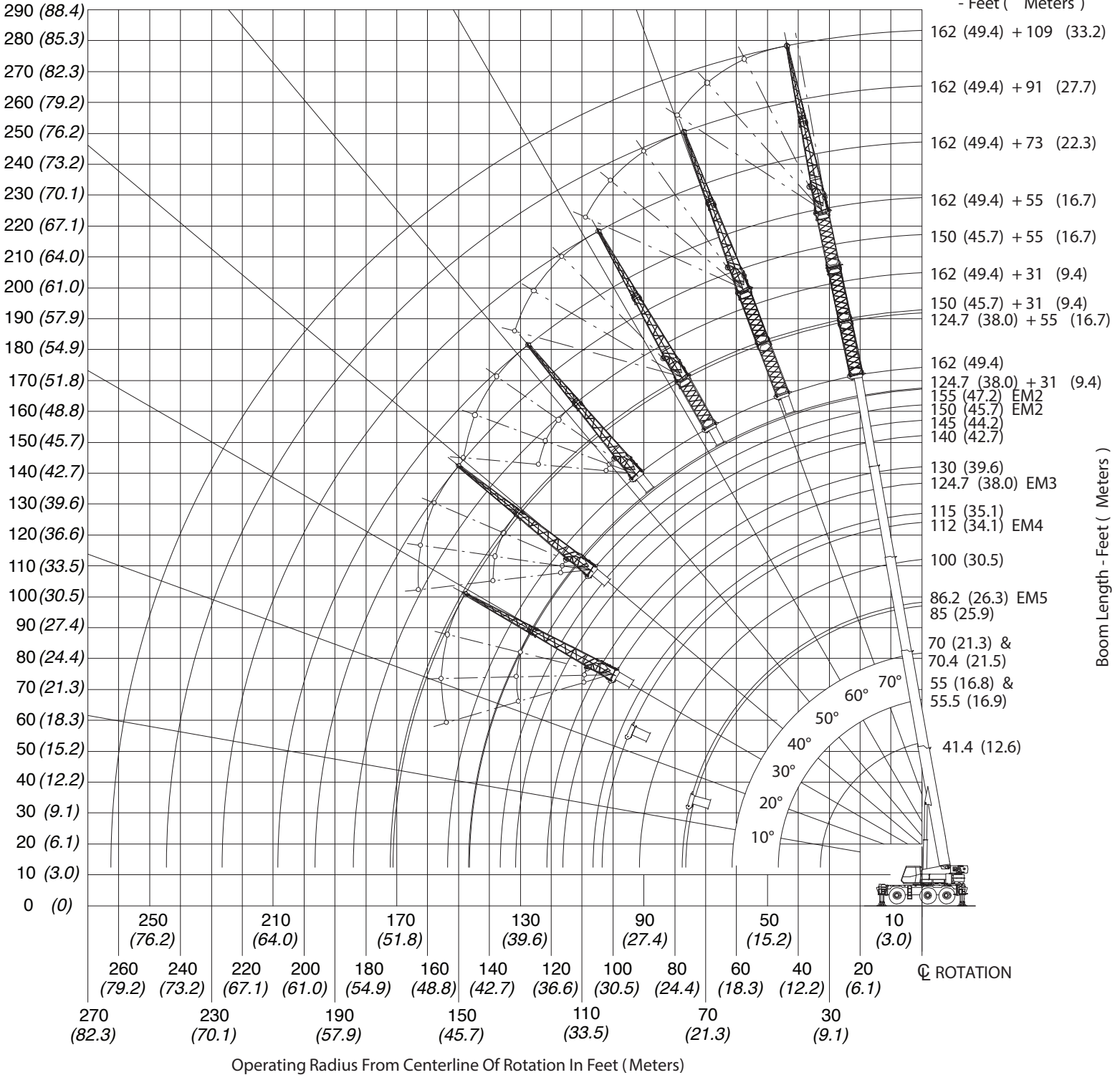


PORTLAND OFFICE: 503.283.3111  
 SEATTLE OFFICE: 206.784.1054  
[WWW.NESSCAMPBELL.COM](http://WWW.NESSCAMPBELL.COM)

# Working Range Diagram

Height Above  
Ground -  
Feet ( Meters )

Boom + Fly Length  
- Feet ( Meters )



Boom Length - Feet ( Meters )



PORTLAND OFFICE: 503.283.3111  
SEATTLE OFFICE: 206.784.1054  
[WWW.NESSCAMPBELL.COM](http://WWW.NESSCAMPBELL.COM)

# Main Boom Lift Capacity Charts - Imperial

29,000 lb Counterweight - Fully Extended Outriggers - 360° Rotation  
(All Capacities Are Listed In Pounds)

| Radius (ft) | Boom Length (ft) |         |         |         |        |        |        |        |        |        | Radius (ft) |     |
|-------------|------------------|---------|---------|---------|--------|--------|--------|--------|--------|--------|-------------|-----|
|             | 41.4             | 55      | 70      | 85      | 100    | 115    | 130    | 145    | 155    | 162    |             |     |
| 9           | *260,000         |         |         |         |        |        |        |        |        |        |             | 9   |
| 10          | 240,600          | 157,000 | 151,100 |         |        |        |        |        |        |        |             | 10  |
| 12          | 218,000          | 157,000 | 150,200 |         |        |        |        |        |        |        |             | 12  |
| 15          | 186,400          | 157,000 | 135,800 | 105,500 |        |        |        |        |        |        |             | 15  |
| 20          | 138,400          | 140,900 | 116,900 | 89,800  | 65,200 | 56,400 |        |        |        |        |             | 20  |
| 25          | 108,500          | 111,200 | 102,400 | 77,900  | 65,200 | 55,500 | 51,000 |        |        |        |             | 25  |
| 30          | 88,100           | 91,000  | 90,900  | 69,100  | 63,900 | 49,400 | 45,400 | 37,200 |        |        |             | 30  |
| 35          |                  | 69,900  | 69,200  | 65,300  | 57,100 | 44,400 | 40,600 | 37,200 | 31,900 | 26,100 |             | 35  |
| 40          |                  | 54,800  | 56,200  | 56,100  | 51,300 | 40,200 | 36,500 | 34,900 | 31,900 | 26,100 |             | 40  |
| 45          |                  | 44,300  | 46,000  | 45,900  | 44,900 | 36,700 | 32,900 | 32,000 | 30,000 | 26,100 |             | 45  |
| 50          |                  |         | 39,200  | 38,300  | 37,400 | 33,600 | 30,100 | 29,400 | 27,500 | 26,100 |             | 50  |
| 55          |                  |         | 33,600  | 33,000  | 32,400 | 30,900 | 27,800 | 37,100 | 25,300 | 24,100 |             | 55  |
| 60          |                  |         | 28,900  | 29,800  | 28,500 | 27,200 | 25,800 | 25,000 | 23,400 | 22,200 |             | 60  |
| 65          |                  |         |         | 26,000  | 26,100 | 24,300 | 24,000 | 23,200 | 21,700 | 20,700 |             | 65  |
| 70          |                  |         |         | 22,900  | 23,000 | 22,700 | 22,200 | 21,600 | 20,200 | 19,200 |             | 70  |
| 75          |                  |         |         | 20,300  | 20,800 | 20,500 | 19,600 | 19,500 | 18,700 | 17,900 |             | 75  |
| 80          |                  |         |         |         | 18,500 | 18,300 | 17,700 | 17,400 | 17,100 | 16,700 |             | 80  |
| 85          |                  |         |         |         | 16,700 | 16,500 | 16,300 | 15,700 | 15,300 | 15,100 |             | 85  |
| 90          |                  |         |         |         | 15,100 | 14,900 | 14,700 | 14,100 | 13,700 | 13,500 |             | 90  |
| 95          |                  |         |         |         |        | 13,400 | 13,300 | 12,700 | 12,300 | 12,100 |             | 95  |
| 100         |                  |         |         |         |        | 12,100 | 12,000 | 11,400 | 11,000 | 10,800 |             | 100 |
| 105         |                  |         |         |         |        | 11,000 | 10,800 | 10,300 | 9,900  | 9,700  |             | 105 |
| 110         |                  |         |         |         |        |        | 9,800  | 9,300  | 8,900  | 8,700  |             | 110 |
| 115         |                  |         |         |         |        |        | 8,900  | 8,300  | 8,000  | 7,800  |             | 115 |
| 120         |                  |         |         |         |        |        | 8,100  | 7,500  | 7,200  | 7,000  |             | 120 |
| 125         |                  |         |         |         |        |        |        | 6,700  | 6,400  | 6,200  |             | 125 |
| 130         |                  |         |         |         |        |        |        | 6,000  | 5,700  | 5,500  |             | 130 |
| 135         |                  |         |         |         |        |        |        | 5,600  | 5,100  | 4,900  |             | 135 |
| 140         |                  |         |         |         |        |        |        |        | 4,500  | 4,300  |             | 140 |
| 145         |                  |         |         |         |        |        |        |        | 4,000  | 3,800  |             | 145 |
| 150         |                  |         |         |         |        |        |        |        |        | 3,300  |             | 150 |

\*\* Special conditions or optional equipment required



PORTLAND OFFICE: 503.283.3111  
SEATTLE OFFICE: 206.784.1054  
[WWW.NESSCAMPBELL.COM](http://WWW.NESSCAMPBELL.COM)



# Main Boom Lift Capacity Charts - Optional

43,000 lb Counterweight - Fully Extended Outriggers - 360° Rotation  
(All Capacities Are Listed In Pounds)

| Radius (ft) | Boom Length (ft) |         |         |         |        |        |        |        |        |        | Radius (ft) |     |
|-------------|------------------|---------|---------|---------|--------|--------|--------|--------|--------|--------|-------------|-----|
|             | 41.4             | 55      | 70      | 85      | 100    | 115    | 130    | 145    | 155    | 162    |             |     |
| 9           | **260,000        |         |         |         |        |        |        |        |        |        |             | 9   |
| 10          | 240,600          | 157,000 | 151,100 |         |        |        |        |        |        |        |             | 10  |
| 12          | 218,000          | 157,000 | 150,200 |         |        |        |        |        |        |        |             | 12  |
| 15          | 190,700          | 157,000 | 135,800 | 105,500 |        |        |        |        |        |        |             | 15  |
| 20          | 145,500          | 148,100 | 116,900 | 89,800  | 65,200 | 56,400 |        |        |        |        |             | 20  |
| 25          | 114,400          | 117,100 | 102,400 | 77,900  | 65,200 | 55,500 | 51,000 |        |        |        |             | 25  |
| 30          | 93,200           | 95,900  | 90,900  | 69,100  | 63,900 | 49,400 | 45,400 | 37,200 |        |        |             | 30  |
| 35          |                  | 80,600  | 81,300  | 65,300  | 57,100 | 44,400 | 40,600 | 37,200 | 31,900 | 26,100 |             | 35  |
| 40          |                  | 65,800  | 67,300  | 64,900  | 51,300 | 40,200 | 36,500 | 34,900 | 31,900 | 26,100 |             | 40  |
| 45          |                  | 53,600  | 55,200  | 55,000  | 46,500 | 36,700 | 32,900 | 32,000 | 30,000 | 26,100 |             | 45  |
| 50          |                  |         | 46,400  | 46,400  | 42,400 | 33,600 | 30,100 | 29,400 | 27,500 | 26,100 |             | 50  |
| 55          |                  |         | 39,500  | 39,700  | 38,700 | 30,900 | 27,800 | 27,100 | 25,300 | 24,100 |             | 55  |
| 60          |                  |         | 35,100  | 34,400  | 33,600 | 28,600 | 25,800 | 25,000 | 23,400 | 22,200 |             | 60  |
| 65          |                  |         |         | 30,100  | 29,300 | 26,500 | 24,000 | 23,200 | 21,700 | 20,700 |             | 65  |
| 70          |                  |         |         | 26,800  | 26,400 | 24,600 | 22,500 | 21,600 | 20,200 | 19,200 |             | 70  |
| 75          |                  |         |         | 25,100  | 23,400 | 22,900 | 21,000 | 20,300 | 18,700 | 17,900 |             | 75  |
| 80          |                  |         |         |         | 22,000 | 20,400 | 19,800 | 19,000 | 17,400 | 16,700 |             | 80  |
| 85          |                  |         |         |         | 20,400 | 18,900 | 18,600 | 17,800 | 16,200 | 15,600 |             | 85  |
| 90          |                  |         |         |         | 18,500 | 17,800 | 17,600 | 16,700 | 15,100 | 14,600 |             | 90  |
| 95          |                  |         |         |         |        | 16,800 | 16,300 | 15,700 | 14,100 | 13,500 |             | 95  |
| 100         |                  |         |         |         |        | 15,500 | 14,900 | 14,600 | 13,100 | 12,600 |             | 100 |
| 105         |                  |         |         |         |        | 14,200 | 13,500 | 13,500 | 12,300 | 11,800 |             | 105 |
| 110         |                  |         |         |         |        |        | 12,300 | 12,300 | 11,500 | 11,000 |             | 110 |
| 115         |                  |         |         |         |        |        | 11,600 | 11,200 | 10,800 | 10,300 |             | 115 |
| 120         |                  |         |         |         |        |        | 10,800 | 10,300 | 10,000 | 9,600  |             | 120 |
| 125         |                  |         |         |         |        |        |        | 9,400  | 9,100  | 8,900  |             | 125 |
| 130         |                  |         |         |         |        |        |        | 8,600  | 8,300  | 8,100  |             | 130 |
| 135         |                  |         |         |         |        |        |        | 7,900  | 7,500  | 7,300  |             | 135 |
| 140         |                  |         |         |         |        |        |        |        | 6,900  | 6,600  |             | 140 |
| 145         |                  |         |         |         |        |        |        |        | 6,200  | 6,000  |             | 145 |
| 150         |                  |         |         |         |        |        |        |        |        | 5,500  |             | 150 |

\*\* Special conditions or optional equipment required



PORTLAND OFFICE: 503.283.3111  
SEATTLE OFFICE: 206.784.1054  
[WWW.NESSCAMPBELL.COM](http://WWW.NESSCAMPBELL.COM)

**29,000 lb Counterweight - Fully Extended Outriggers - 360° Rotation**  
 (All Capacities Are Listed In Pounds)

**162 ft Main Boom Length**

| Radius (ft) | 31 ft Manual Offset Fly |            |            |            | 55 ft Manual Offset Fly |            |            |            | Radius (ft) |
|-------------|-------------------------|------------|------------|------------|-------------------------|------------|------------|------------|-------------|
|             | 2° Offset               | 15° Offset | 30° Offset | 45° Offset | 2° Offset               | 15° Offset | 30° Offset | 45° Offset |             |
| 35          | 14,600                  |            |            |            |                         |            |            |            | 35          |
| 40          | 14,600                  |            |            |            | 10,600                  |            |            |            | 40          |
| 45          | 14,600                  | 14,600     |            |            | 10,600                  |            |            |            | 45          |
| 50          | 14,600                  | 14,600     |            |            | 10,600                  |            |            |            | 50          |
| 55          | 14,600                  | 14,600     | 14,300     |            | 10,600                  |            |            |            | 55          |
| 60          | 14,600                  | 14,600     | 14,100     | 13,200     | 10,600                  | 9,700      |            |            | 60          |
| 65          | 14,600                  | 14,600     | 14,000     | 13,100     | 10,600                  | 9,500      |            |            | 65          |
| 70          | 14,600                  | 14,600     | 13,800     | 13,100     | 10,500                  | 9,400      | 8,300      |            | 70          |
| 75          | 14,600                  | 14,600     | 13,700     | 13,000     | 10,300                  | 9,200      | 8,200      |            | 75          |
| 80          | 14,200                  | 14,400     | 13,600     | 12,900     | 10,200                  | 9,000      | 8,100      |            | 80          |
| 85          | 13,200                  | 13,400     | 13,500     | 12,800     | 10,000                  | 8,900      | 8,000      | 7,300      | 85          |
| 90          | 12,300                  | 12,500     | 12,800     | 12,800     | 9,800                   | 8,700      | 7,800      | 7,300      | 90          |
| 95          | 11,500                  | 11,700     | 11,900     | 12,100     | 9,600                   | 8,600      | 7,700      | 7,200      | 95          |
| 100         | 10,700                  | 10,900     | 11,100     | 11,300     | 9,500                   | 8,500      | 7,600      | 7,100      | 100         |
| 105         | 9,500                   | 10,100     | 10,400     | 10,600     | 9,200                   | 8,300      | 7,600      | 7,100      | 105         |
| 110         | 8,500                   | 9,000      | 9,500      | 9,900      | 8,600                   | 8,200      | 7,500      | 7,100      | 110         |
| 115         | 7,600                   | 8,100      | 8,500      | 8,800      | 8,000                   | 8,100      | 7,400      | 7,000      | 115         |
| 120         | 6,800                   | 7,200      | 7,600      | 7,900      | 7,500                   | 7,800      | 7,300      | 7,000      | 120         |
| 125         | 6,000                   | 6,400      | 6,800      | 7,000      | 6,700                   | 7,300      | 7,300      | 7,000      | 125         |
| 130         | 5,300                   | 5,700      | 6,000      | 6,200      | 6,000                   | 6,700      | 7,000      | 6,900      | 130         |
| 135         | 4,700                   | 5,000      | 5,300      | 5,500      | 5,300                   | 6,000      | 6,600      | 6,800      | 135         |
| 140         | 4,100                   | 4,400      | 4,700      | 4,800      | 4,800                   | 5,300      | 5,900      | 6,300      | 140         |
| 145         | 3,600                   | 3,900      | 4,100      | 4,200      | 4,200                   | 4,800      | 5,300      | 5,600      | 145         |
| 150         | 3,100                   | 3,400      | 3,600      |            | 3,700                   | 4,200      | 4,700      | 5,000      | 150         |
| 155         | 2,600                   | 2,900      | 3,000      |            | 3,200                   | 3,700      | 4,100      | 4,400      | 155         |
| 160         | 2,200                   | 2,400      | 2,600      |            | 2,800                   | 3,200      | 3,600      | 3,800      | 160         |
| 165         | 1,800                   | 2,000      | 2,100      |            | 2,400                   | 2,800      | 3,100      | 3,300      | 165         |
| 170         | 1,500                   | 1,600      |            |            | 2,000                   | 2,400      | 2,700      | 2,800      | 170         |
| 175         |                         | 1,200      |            |            | 1,700                   | 2,000      | 2,200      |            | 175         |
| 180         |                         |            |            |            | 1,300                   | 1,600      | 1,800      |            | 180         |
| 185         |                         |            |            |            |                         | 1,300      | 1,500      |            | 185         |



PORTLAND OFFICE: 503.283.3111  
 SEATTLE OFFICE: 206.784.1054  
[WWW.NESSCAMPBELL.COM](http://WWW.NESSCAMPBELL.COM)

**43,000 lb Counterweight - Fully Extended Outriggers - 360° Rotation**  
 (All Capacities Are Listed In Pounds)

**162 ft Main Boom Length**

| Radius (ft) | 31 ft Manual Offset Fly |            |            |            | 55 ft Manual Offset Fly |            |            |            | Radius (ft) |
|-------------|-------------------------|------------|------------|------------|-------------------------|------------|------------|------------|-------------|
|             | 2° Offset               | 15° Offset | 30° Offset | 45° Offset | 2° Offset               | 15° Offset | 30° Offset | 45° Offset |             |
| 35          | 14,600                  |            |            |            |                         |            |            |            | 35          |
| 40          | 14,600                  |            |            |            | 10,600                  |            |            |            | 40          |
| 45          | 14,600                  | 14,600     |            |            | 10,600                  |            |            |            | 45          |
| 50          | 14,600                  | 14,600     |            |            | 10,600                  |            |            |            | 50          |
| 55          | 14,600                  | 14,600     | 14,300     |            | 10,600                  |            |            |            | 55          |
| 60          | 14,600                  | 14,600     | 14,100     | 13,200     | 10,600                  | 9,700      |            |            | 60          |
| 65          | 14,600                  | 14,600     | 14,000     | 13,100     | 10,600                  | 9,500      |            |            | 65          |
| 70          | 14,600                  | 14,600     | 13,800     | 13,100     | 10,500                  | 9,400      | 8,300      |            | 70          |
| 75          | 14,600                  | 14,600     | 13,700     | 13,000     | 10,300                  | 9,200      | 8,200      |            | 75          |
| 80          | 14,200                  | 14,400     | 13,600     | 12,900     | 10,200                  | 9,000      | 8,100      |            | 80          |
| 85          | 13,200                  | 13,400     | 13,500     | 12,800     | 10,000                  | 8,900      | 8,000      | 7,300      | 85          |
| 90          | 12,300                  | 12,500     | 12,800     | 12,800     | 9,800                   | 8,700      | 7,800      | 7,300      | 90          |
| 95          | 11,500                  | 11,700     | 11,900     | 12,100     | 9,600                   | 8,600      | 7,700      | 7,200      | 95          |
| 100         | 10,700                  | 10,900     | 11,100     | 11,300     | 9,500                   | 8,500      | 7,600      | 7,100      | 100         |
| 105         | 10,000                  | 10,200     | 10,400     | 10,600     | 9,200                   | 8,300      | 7,600      | 7,100      | 105         |
| 110         | 9,400                   | 9,600      | 9,800      | 9,900      | 8,600                   | 8,200      | 7,500      | 7,100      | 110         |
| 115         | 8,800                   | 8,900      | 9,100      | 9,300      | 8,000                   | 8,100      | 7,400      | 7,000      | 115         |
| 120         | 8,200                   | 8,400      | 8,600      | 8,700      | 7,500                   | 7,800      | 7,300      | 7,000      | 120         |
| 125         | 7,700                   | 7,800      | 8,000      | 8,100      | 7,000                   | 7,300      | 7,300      | 7,000      | 125         |
| 130         | 7,200                   | 7,300      | 7,500      | 7,600      | 6,600                   | 6,800      | 7,000      | 6,900      | 130         |
| 135         | 6,700                   | 6,900      | 7,000      | 7,100      | 6,100                   | 6,300      | 6,600      | 6,800      | 135         |
| 140         | 6,300                   | 6,400      | 6,600      | 6,700      | 5,700                   | 5,900      | 6,100      | 6,300      | 140         |
| 145         | 5,800                   | 6,000      | 6,100      | 6,200      | 5,300                   | 5,500      | 5,700      | 5,900      | 145         |
| 150         | 5,300                   | 5,500      | 5,700      |            | 5,000                   | 5,200      | 5,400      | 5,500      | 150         |
| 155         | 4,700                   | 5,000      | 5,100      |            | 4,600                   | 4,800      | 5,000      | 5,100      | 155         |
| 160         | 4,200                   | 4,400      | 4,600      |            | 4,300                   | 4,500      | 4,700      | 4,800      | 160         |
| 165         | 3,800                   | 4,000      | 4,100      |            | 4,000                   | 4,200      | 4,300      | 4,400      | 165         |
| 170         | 3,400                   | 3,500      | 3,600      |            | 3,800                   | 3,900      | 4,000      | 4,100      | 170         |
| 175         | 3,000                   | 3,100      |            |            | 3,500                   | 3,600      | 3,700      |            | 175         |
| 180         | 2,600                   | 2,700      |            |            | 3,100                   | 3,400      | 3,500      |            | 180         |
| 185         |                         |            |            |            | 2,800                   | 3,000      | 3,200      |            | 185         |
| 190         |                         |            |            |            | 2,400                   | 2,600      | 2,800      |            | 190         |
| 195         |                         |            |            |            | 2,100                   | 2,300      | 2,400      |            | 195         |
| 200         |                         |            |            |            | 1,800                   | 2,000      |            |            | 200         |
| 205         |                         |            |            |            | 1,600                   | 1,600      |            |            | 205         |



PORTLAND OFFICE: 503.283.3111  
 SEATTLE OFFICE: 206.784.1054  
[WWW.NESSCAMPBELL.COM](http://WWW.NESSCAMPBELL.COM)

**29,000 lb Counterweight - Fully Extended Outriggers - 360° Rotation**  
 (All Capacities Are Listed In Pounds)

**162 ft Main Boom Length**

| Radius (ft) | 73 ft Manual Offset Fly |            |            |            | 91 ft Manual Offset Fly |            |            |            | 109 ft Manual Offset Fly |            |            |            | Radius (ft) |
|-------------|-------------------------|------------|------------|------------|-------------------------|------------|------------|------------|--------------------------|------------|------------|------------|-------------|
|             | 2° Offset               | 15° Offset | 30° Offset | 45° Offset | 2° Offset               | 15° Offset | 30° Offset | 45° Offset | 2° Offset                | 15° Offset | 30° Offset | 45° Offset |             |
| 55          | 8,500                   |            |            |            |                         |            |            |            |                          |            |            |            | 55          |
| 60          | 8,500                   |            |            |            | 6,500                   |            |            |            |                          |            |            |            | 60          |
| 65          | 8,500                   |            |            |            | 6,500                   |            |            |            | 5,000                    |            |            |            | 65          |
| 70          | 8,500                   | 8,500      |            |            | 6,500                   |            |            |            | 5,000                    |            |            |            | 70          |
| 75          | 8,500                   | 8,500      |            |            | 6,500                   | 6,500      |            |            | 5,000                    |            |            |            | 75          |
| 80          | 8,500                   | 8,500      |            |            | 6,500                   | 6,500      |            |            | 5,000                    |            |            |            | 80          |
| 85          | 8,500                   | 8,400      | 7,600      |            | 6,500                   | 6,500      |            |            | 5,000                    | 5,000      |            |            | 85          |
| 90          | 8,500                   | 8,300      | 7,500      |            | 6,500                   | 6,500      | 6,100      |            | 5,000                    | 5,000      |            |            | 90          |
| 95          | 8,500                   | 8,200      | 7,500      | 6,800      | 6,500                   | 6,500      | 5,900      |            | 5,000                    | 4,900      |            |            | 95          |
| 100         | 8,500                   | 8,100      | 7,400      | 6,600      | 6,500                   | 6,300      | 5,600      | 5,200      | 5,000                    | 4,600      | 4,200      |            | 100         |
| 105         | 8,500                   | 8,000      | 7,100      | 6,400      | 6,500                   | 6,000      | 5,400      | 5,000      | 4,700                    | 4,400      | 4,000      |            | 105         |
| 110         | 8,000                   | 7,900      | 6,900      | 6,300      | 6,400                   | 5,800      | 5,200      | 4,800      | 4,500                    | 4,100      | 3,800      | 3,500      | 110         |
| 115         | 7,400                   | 7,700      | 6,700      | 6,100      | 6,100                   | 5,500      | 5,000      | 4,600      | 4,200                    | 3,900      | 3,600      | 3,400      | 115         |
| 120         | 6,900                   | 7,100      | 6,500      | 6,000      | 5,800                   | 5,300      | 4,800      | 4,500      | 4,000                    | 3,700      | 3,400      | 3,200      | 120         |
| 125         | 6,400                   | 6,600      | 6,300      | 5,800      | 5,500                   | 5,100      | 4,600      | 4,300      | 3,800                    | 3,500      | 3,200      | 3,000      | 125         |
| 130         | 5,800                   | 6,200      | 6,200      | 5,700      | 5,100                   | 4,900      | 4,400      | 4,200      | 3,600                    | 3,300      | 3,000      | 2,900      | 130         |
| 135         | 5,100                   | 5,700      | 6,000      | 5,600      | 4,700                   | 4,700      | 4,300      | 4,000      | 3,400                    | 3,200      | 2,900      | 2,700      | 135         |
| 140         | 4,500                   | 5,100      | 5,600      | 5,500      | 4,300                   | 4,500      | 4,100      | 3,900      | 3,200                    | 3,000      | 2,700      | 2,600      | 140         |
| 145         | 4,000                   | 4,500      | 5,100      | 5,400      | 3,900                   | 4,200      | 4,000      | 3,800      | 3,100                    | 2,800      | 2,600      | 2,400      | 145         |
| 150         | 3,500                   | 4,000      | 4,500      | 4,900      | 3,400                   | 3,900      | 3,900      | 3,700      | 2,900                    | 2,700      | 2,500      | 2,300      | 150         |
| 155         | 3,000                   | 3,400      | 4,000      | 4,300      | 2,900                   | 3,400      | 3,700      | 3,600      | 2,600                    | 2,600      | 2,300      | 2,200      | 155         |
| 160         | 2,500                   | 3,000      | 3,500      | 3,800      | 2,400                   | 2,900      | 3,500      | 3,500      | 2,300                    | 2,400      | 2,200      | 2,100      | 160         |
| 165         | 2,100                   | 2,500      | 3,000      | 3,300      | 2,000                   | 2,500      | 3,000      | 3,300      | 1,900                    | 2,200      | 2,100      | 2,000      | 165         |
| 170         | 1,800                   | 2,100      | 2,500      | 2,800      | 1,600                   | 2,100      | 2,500      | 2,800      | 1,500                    | 2,000      | 2,000      | 1,900      | 170         |
| 175         | 1,400                   | 1,700      | 2,100      | 2,300      | 1,300                   | 1,700      | 2,100      | 2,400      |                          | 1,600      | 1,900      | 1,800      | 175         |
| 180         |                         | 1,400      | 1,700      | 1,900      |                         | 1,300      | 1,700      | 1,900      |                          | 1,200      | 1,700      | 1,700      | 180         |
| 185         |                         |            | 1,300      | 1,500      |                         |            | 1,300      | 1,500      |                          |            | 1,300      | 1,500      | 185         |
| 190         |                         |            |            |            |                         |            |            |            |                          |            |            | 1,200      | 190         |



PORTLAND OFFICE: 503.283.3111  
 SEATTLE OFFICE: 206.784.1054  
[WWW.NESSCAMPBELL.COM](http://WWW.NESSCAMPBELL.COM)

**43,000 lb Counterweight - Fully Extended Outriggers - 360° Rotation**  
 (All Capacities Are Listed In Pounds)

**162 ft Main Boom Length**

| Radius (ft) | 73 ft Manual Offset Fly |            |            |            | 91 ft Manual Offset Fly |            |            |            | 109 ft Manual Offset Fly |            |            |            | Radius (ft) |
|-------------|-------------------------|------------|------------|------------|-------------------------|------------|------------|------------|--------------------------|------------|------------|------------|-------------|
|             | 2° Offset               | 15° Offset | 30° Offset | 45° Offset | 2° Off-set              | 15° Offset | 30° Offset | 45° Offset | 2° Off-set               | 15° Offset | 30° Offset | 45° Offset |             |
| 55          | 8,500                   |            |            |            |                         |            |            |            |                          |            |            |            | 55          |
| 60          | 8,500                   |            |            |            | 6,500                   |            |            |            |                          |            |            |            | 60          |
| 65          | 8,500                   |            |            |            | 6,500                   |            |            |            | 5,000                    |            |            |            | 65          |
| 70          | 8,500                   | 8,500      |            |            | 6,500                   |            |            |            | 5,000                    |            |            |            | 70          |
| 75          | 8,500                   | 8,500      |            |            | 6,500                   | 6,500      |            |            | 5,000                    |            |            |            | 75          |
| 80          | 8,500                   | 8,500      |            |            | 6,500                   | 6,500      |            |            | 5,000                    |            |            |            | 80          |
| 85          | 8,500                   | 8,400      | 7,600      |            | 6,500                   | 6,500      |            |            | 5,000                    | 5,000      |            |            | 85          |
| 90          | 8,500                   | 8,300      | 7,500      |            | 6,500                   | 6,500      | 6,100      |            | 5,000                    | 5,000      |            |            | 90          |
| 95          | 8,500                   | 8,200      | 7,500      | 6,800      | 6,500                   | 6,500      | 5,900      |            | 5,000                    | 4,900      |            |            | 95          |
| 100         | 8,500                   | 8,100      | 7,400      | 6,600      | 6,500                   | 6,300      | 5,600      | 5,200      | 5,000                    | 4,600      | 4,200      |            | 100         |
| 105         | 8,500                   | 8,000      | 7,100      | 6,400      | 6,500                   | 6,000      | 5,400      | 5,000      | 4,700                    | 4,400      | 4,000      |            | 105         |
| 110         | 8,000                   | 7,900      | 6,900      | 6,300      | 6,400                   | 5,800      | 5,200      | 4,800      | 4,500                    | 4,100      | 3,800      | 3,500      | 110         |
| 115         | 7,400                   | 7,700      | 6,700      | 6,100      | 6,100                   | 5,500      | 5,000      | 4,600      | 4,200                    | 3,900      | 3,600      | 3,400      | 115         |
| 120         | 6,900                   | 7,100      | 6,500      | 6,000      | 5,800                   | 5,300      | 4,800      | 4,500      | 4,000                    | 3,700      | 3,400      | 3,200      | 120         |
| 125         | 6,400                   | 6,600      | 6,300      | 5,800      | 5,500                   | 5,100      | 4,600      | 4,300      | 3,800                    | 3,500      | 3,200      | 3,000      | 125         |
| 130         | 6,000                   | 6,200      | 6,200      | 5,700      | 5,100                   | 4,900      | 4,400      | 4,200      | 3,600                    | 3,300      | 3,000      | 2,900      | 130         |
| 135         | 5,500                   | 5,800      | 6,000      | 5,600      | 4,700                   | 4,700      | 4,300      | 4,000      | 3,400                    | 3,200      | 2,900      | 2,700      | 135         |
| 140         | 5,100                   | 5,400      | 5,600      | 5,500      | 4,300                   | 4,500      | 4,100      | 3,900      | 3,200                    | 3,000      | 2,700      | 2,600      | 140         |
| 145         | 4,800                   | 5,000      | 5,200      | 5,400      | 4,000                   | 4,200      | 4,000      | 3,800      | 3,100                    | 2,800      | 2,600      | 2,400      | 145         |
| 150         | 4,400                   | 4,600      | 4,800      | 5,000      | 3,600                   | 3,900      | 3,900      | 3,700      | 2,900                    | 2,700      | 2,500      | 2,300      | 150         |
| 155         | 4,100                   | 4,300      | 4,500      | 4,700      | 3,300                   | 3,500      | 3,700      | 3,600      | 2,600                    | 2,600      | 2,300      | 2,200      | 155         |
| 160         | 3,700                   | 3,900      | 4,100      | 4,300      | 3,000                   | 3,200      | 3,500      | 3,500      | 2,300                    | 2,400      | 2,200      | 2,100      | 160         |
| 165         | 3,400                   | 3,600      | 3,800      | 4,000      | 2,700                   | 2,900      | 3,200      | 3,400      | 2,000                    | 2,200      | 2,100      | 2,000      | 165         |
| 170         | 3,200                   | 3,300      | 3,500      | 3,700      | 2,500                   | 2,700      | 2,900      | 3,100      | 1,800                    | 2,000      | 2,000      | 1,900      | 170         |
| 175         | 2,900                   | 3,000      | 3,200      | 3,300      | 2,200                   | 2,400      | 2,600      | 2,800      | 1,500                    | 1,700      | 1,900      | 1,800      | 175         |
| 180         | 2,600                   | 2,800      | 2,900      | 3,000      | 2,000                   | 2,100      | 2,300      | 2,500      | 1,300                    | 1,500      | 1,700      | 1,700      | 180         |
| 185         | 2,400                   | 2,500      | 2,700      | 2,800      | 1,700                   | 1,900      | 2,100      | 2,200      |                          | 1,200      | 1,400      | 1,600      | 185         |
| 190         | 2,100                   | 2,300      | 2,400      | 2,500      | 1,500                   | 1,700      | 1,800      | 1,900      |                          |            | 1,200      | 1,300      | 190         |
| 195         | 1,800                   | 2,000      | 2,200      |            | 1,300                   | 1,400      | 1,600      | 1,700      |                          |            |            |            | 195         |
| 200         | 1,500                   | 1,700      | 1,900      |            |                         | 1,200      | 1,400      | 1,400      |                          |            |            |            | 200         |
| 205         | 1,200                   | 1,400      | 1,500      |            |                         |            |            | 1,200      |                          |            |            |            | 205         |
| 210         |                         |            | 1,200      |            |                         |            |            |            |                          |            |            |            | 210         |



PORTLAND OFFICE: 503.283.3111  
 SEATTLE OFFICE: 206.784.1054  
[WWW.NESSCAMPBELL.COM](http://WWW.NESSCAMPBELL.COM)