



NESSCAMPBELL NEWSLETTER SUMMER 2023



+ NESSCAMPBELL AND ALL STAR BASEBALL

NESSCAMPBELL CRANE + RIGGING ACCEPTS THE CHALLENGE!

Our crew was out in Canby, Oregon moving and setting overhead cranes in and outside of a warehouse.

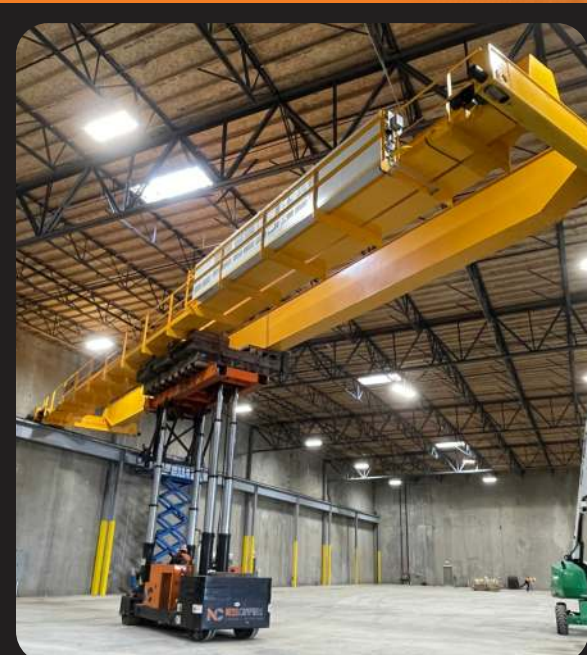
We used our 140 Ton Link-Belt 3140 HT Crane to lift the overhead cranes off the truck and on to our Tri-Lifter. Our Tri-Lifter moved and lifted the overhead cranes into place. The overhead cranes weighed 45,000 - 75,000 lbs with lengths ranges from 70 - 100 ft long.

Shout out to our NessCampbell crew for their hard work and safe practices.

- + MLC300 PANEL LIFTS
- + 500 TON AT OSU
- + LAS VEGAS HAUL
- + EMPLOYEE SPOTLIGHTS
- + KALAMA TOTEM POLE
- + 600 TON TOWER CRANE SETUP
- + NC SAFETY SUMMERY



ENTER TO WIN





RAIN? NO PROBLEM FOR OUR MLC300!

It's raining, it's pouring, our Manitowoc MLC300-VPC Max 330 Ton Crawler Crane is roaring! Our crew was out in Salem for a tilt-up panel job. Gray skies or blue skies our NessCampbell crew shows up and gets it done! Our amazing crew of James, Buster, and Tyler, safely utilized our Manitowoc MLC300 to lift 75,000-120,000 lbs concrete panels in the pouring rain.

NESSCAMPBELL WENT BACK TO SCHOOL

We were out in Corvallis at Reser Stadium helping replace hard to reach lights. We used a whopping 253' of luffing jib and 118' of main boom on our 500 Ton Liebherr LTM 1400-7.1 AT Crane. What a reach?! Maybe we'll try out for the OSU Beavers football team next season.





NESSCAMPBELL CRANE + RIGGING ROLLS THE DICE - 4 [TRANSFORMERS] THE HARD WAY

NessCampbell Crane + Rigging was out in Las Vegas last May hauling four 308,000 lbs transformers. We used a 160 Ton Dual Lane Trailer with 20 axles to complete the 25-mile haul. Total length from truck to truck was 220 ft. It took extensive planning and coordination to pull this off, between timing and the windy weather you could say lady luck was on our side. A very big THANK YOU to everyone involved!



NESSCAMPBELL EMPLOYEE SPOTLIGHT



EMPLOYEE SPOTLIGHT

• LEE WILL BE CELEBRATING HIS 5-YEAR ANNIVERSARY WITH NESSCAMPBELL IN AUGUST.

• LEE IS A BUSINESS MANAGEMENT GRADUATE FROM OREGON STATE UNIVERSITY

• LEE HIGHLIGHTS HIS FAVORITE TWO KEY FACTORS WHILE WORKING FOR NESSCAMPBELL: THE PEOPLE AND THE EQUIPMENT

"THE THINGS THAT MAKE OUR WORK CHALLENGING AT NESSCAMPBELL CRANE & RIGGING ARE THE SAME THINGS THAT MAKE IT REWARDING. FIRST AND FOREMOST, WE SERVE A CUSTOMER SERVICE ROLE. WE WORK WITH EVERY TYPE OF CUSTOMER, FROM NEARLY EVERY WALK OF LIFE. WE MUST COMMUNICATE AND STRESS THE IMPORTANCE OF THE MANY DIFFERENT EQUIPMENT CAPABILITY CHALLENGES AND SAFETY CONCERNS ON EACH JOB, EVERY DAY."

LEE BROWN
SALES MANAGER - CRANE SERVICE SOUTH



EMPLOYEE SPOTLIGHT

• JOHN HAS WORKED FOR NESSCAMPBELL FOR 22 YEARS

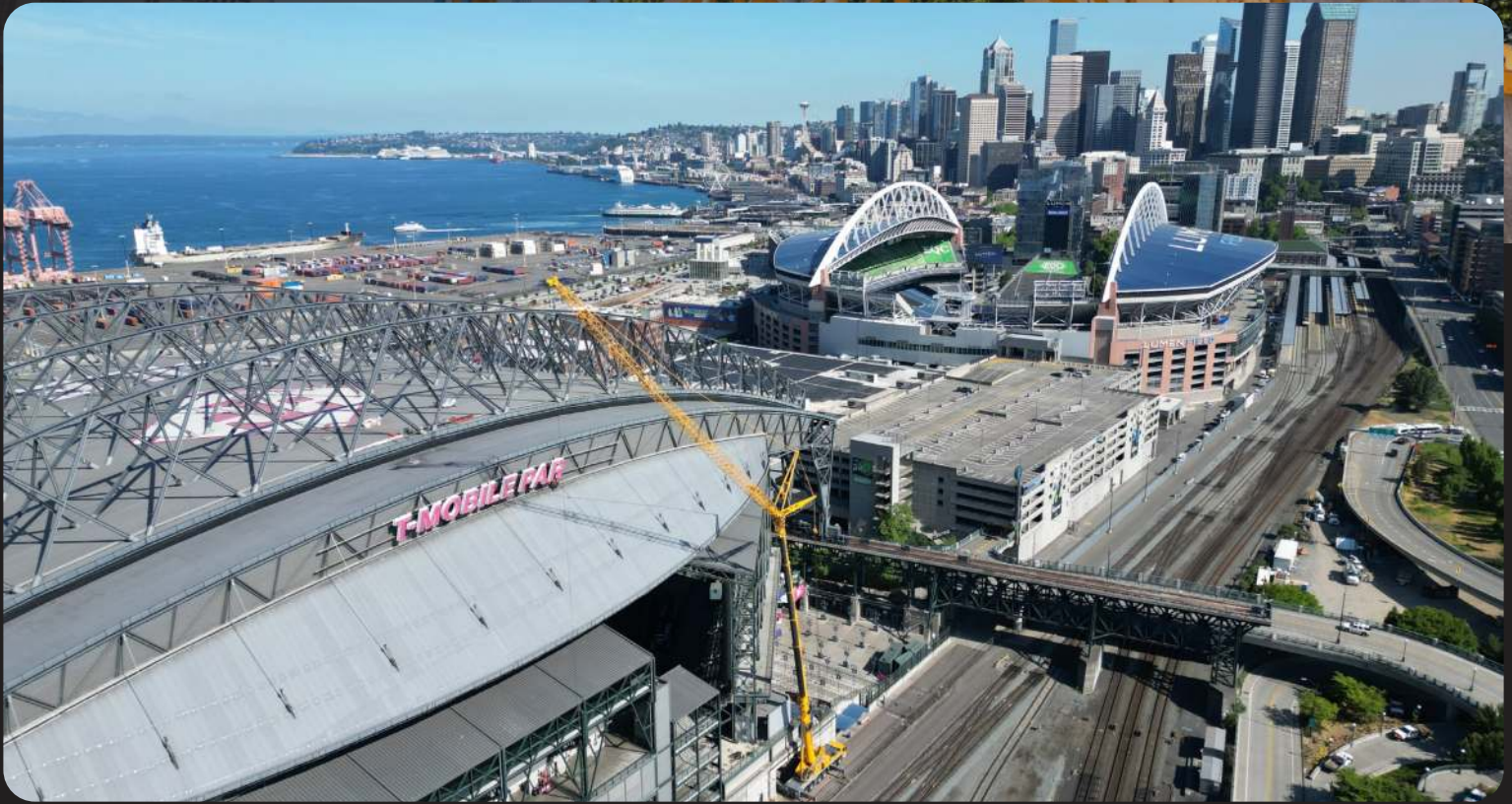
• JOHN STARTED ON ROUGH TERRAIN CRANES AND WORKED HIS WAY UP TO CRANE SUPERINTENDENT OVER THE YEARS. HE IS ONE OF THE MOST KNOWLEDGEABLE EMPLOYEES AT NESSCAMPBELL

• JOHN HIGHLIGHTS HIS FAVORITE TWO KEY FACTORS WHILE WORKING FOR NESSCAMPBELL: SAFETY AND HIS CO-WORKERS

"BEING A TEAM PLAYER MEANS LIFTING EACH OTHER HIGHER, BOTH FIGURATIVELY AND LITERALLY. AS A MENTOR, I PASS ON NOT JUST SKILLS, BUT THE SPIRIT OF CAMARADERIE AND DEDICATION. SAFETY IS BIGGER THAN ALL OF US; IT'S THE FOUNDATION THAT KEEPS US PROTECTED. AND WITHIN THIS INCREDIBLE COMPANY, I'VE FOUND NOT JUST CO-WORKERS BUT GREAT FRIENDS WHO MAKE EVERY DAY A JOYOUS JOURNEY."

JOHN TRICKEY
WA CRANE SUPERINTENDENT





NESSCAMPBELL CRANE + RIGGING, SEATTLE, AND ALL-STAR BASEBALL

The MLB All Star Game is hosted by the Seattle Mariners this year. As a company committed to the Pacific Northwest's history, we are honored to contribute to the region's iconic landmarks like T-Mobile Park.

Our crew's dedication and expertise were put to the test as they tackled this impressive feat. With safety as our utmost priority, our team carefully worked from heights of approximately 200 feet on the stadium's roof. To ensure a seamless operation, we employed our powerful 360 Ton Liebherr LTM 1300-6.2 AT Crane, equipped with a 195-foot luffing jib and 144 feet of main boom.

Prior to this replacement, in 2019 NessCampbell was tasked with removing the old Safeco Park signage and updating it to the new T-Mobile Park signage. Go Mariners!



NESSCAMPBELL SAFETY SUMMERY

Training participation has tripled this year over last year, and it's only Summer. This includes our NessCampbell University and in person training with Rigger 1 and Rigger 2. We have multiple people prepping for the Lift Director certification.

The crews in the field are actively involved in our safety audits. They eagerly accept the safety team on site with questions and concerns. Our safety team has built a reputation with our field crews, they know we have their back. They ask for the safety team to come look at their jobs all the time.

Our orientation process sets the standard in the industry. We have had new hired team members come onboard and make statements such as, "I've been in the trade for decades, I've never had to spend this much time on orientation and training anywhere". We go above the established regulations with evaluating operators, even seasoned operators that have been with us for many years. If we don't have a written evaluation on an operator, they cannot operate that crane until they have been evaluated.

We, as a crane rental company, are one of a very few that are NCCCO (National Commission for the Certification of Crane Operators) certified training and test facilities. We have implemented the use of a QR code on our training cards, this has set the standard. NCCCO saw this and they have followed suit, their training cards now have a QR code as well.

The toolbox talk process has been a great improvement in getting our toolbox talks out to all team members. Most of our team members move from job site to job site, basically on a daily basis, we use internal email marketing for our weekly toolbox talks and Incident Notifications. We are able to verify who has or hasn't opened and responded to the week TBT. We also use this to report out to all employees the incidents/near misses/lessons learned on a weekly basis. We want everyone to be able to learn from these incidents and near misses. Let's not forget, SAFETY is a Core Value at NessCampbell Crane + Rigging.

Steve Spurlock - Corporate Safety Director

**ENTER TO WIN!
BLACKSTONE
28" XL CULINARY
W/GRIDDLE, 2 BURNER RANGE, + FRYER
WINNER WILL BE CHOSEN IN SEPTEMBER**

