

# SPYDER CRANE

## 6,450 LBS

SPYDER CRANE URW295

BOOM LENGTHS:  
8 TO 28 FT

JIB LENGTHS:  
6 FT

JIB OFFSETS:  
0 - 20 - 40 - 60

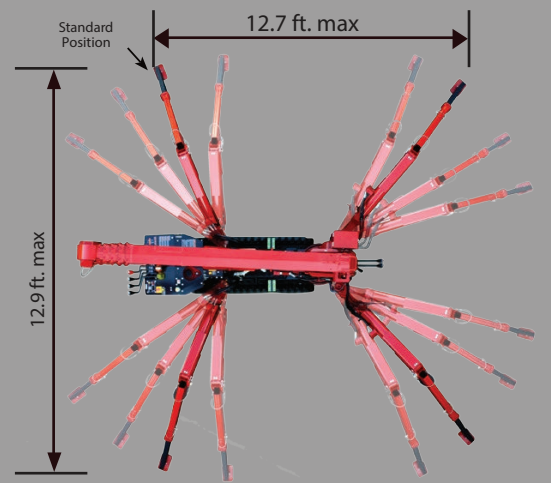


# NOTES:



- Only 24" wide
- Full-function wireless radio remote controls
- Centrally located infinite variable controls - Automatic throttle
- Onboard self-diagnostic computer system
- Anti-two block system
- Hexagonal boom design with 31 ft. tip height (37 ft with jib)
- Automatic hook stow system
- UNIC patented outrigger overturn monitoring system to allow 52 outrigger configurations.
- 360 Degree continuous rotation

## 52 OUTRIGGER POSITIONS



OUTRIGGERS MINIMUM

OUTRIGGERS MAXIMUM



## LOAD CHART

Lifting capacity varies depending on outrigger configuration and boom length and angle.

BOOM SECTION 1 EXTENDED   BOOM SECTION 1 + 2 EXTENDED									
Working Radius (ft.)	3	4.5	5	6	7	8	10	11	13
Outriggers Maximum (lbs.)	6,450	6,450	5,920	5,040	4,595	3,715	2,940	2,275	2,055
Outriggers Minimum (lbs.)	4,485	4,485	4,485	3,270	2,500	1,505	1,150	840	620
BOOM SECTION 1 + 2 + 3 EXTENDED									
Working Radius (ft.)	7	8	9	10	11	13	15	16	18
Outriggers Maximum (lbs.)	3,050	3,050	3,050	2,830	2,275	1,835	1,500	1,215	1,015
Outriggers Minimum (lbs.)	1,835	1,500	1,240	1,170	905	685	555	420	330
BOOM SECTION 1 + 2 + 3 + 4 EXTENDED									
Working Radius (ft.)	11	12	13	15	16	18	20	21	23
Outriggers Maximum (lbs.)	1,945	1,945	1,725	1,390	1,170	995	860	775	665
Outriggers Minimum (lbs.)	995	815	730	620	485	375	290	245	200
BOOM SECTION 1 + 2 + 3 + 4 + 5 EXTENDED									
Working Radius (ft.)	12	13	15	16	18	20	21	23	26
Outriggers Maximum (lbs.)	1,280	1,280	1,060	885	750	665	575	510	400
Outriggers Minimum (lbs.)	840	705	620	510	420	355	290	220	155

## Rated Load for Extension Jib in lbs.

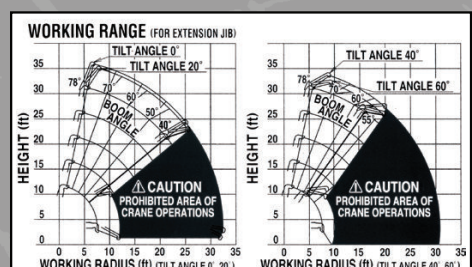
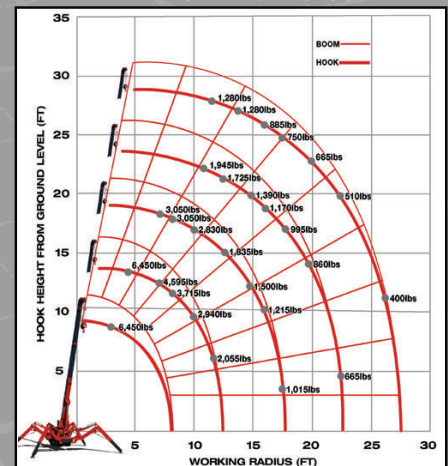
1st to 4th BOOM SECTIONS									
Boom Angle	78°	75°	70°	65°	60°	55°	50°	40°	30°
Tilt Angle	0°	1580	1580	1580	1140	810	590	590	PROHIBITED AREA OF CRANE OPERATIONS
	20°	1580	1580	1580	1140	810	590	590	
	40°	1580	1580	1580	1140	810			
	60°	1580	1580	1580	1140	810			
5th BOOM SECTION ONLY									
Boom Angle	78°	75°	70°	65°	60°	55°	50°	40°	30°
Tilt Angle	0°	920	920	920	590	480	370	260	PROHIBITED AREA OF CRANE OPERATIONS
	20°	920	920	920	590	480	370	260	
	40°	920	920	920	590	480			
	60°	920	920	920	590	480			

## Rated Load for Searcher Hook in lbs.

1st to 4th BOOM SECTIONS									
Working Radius (ft.)	12.5	13	15	16	18	20	21	23	26
Outriggers Maximum (lbs.)	1,560	1,560	1,060	940	740	570	520	410	310
Outriggers Minimum (lbs.)	560	460	330	280	190	120	110		PROHIBITED AREA OF CRANE OPERATIONS
5th BOOM SECTION ONLY									
Working Radius (ft.)	12.5	13	15	16	18	20	21	23	26
Outriggers Maximum (lbs.)	1,120	1,010	870	740	670	570	510	410	310
Outriggers Minimum (lbs.)	560	460	330	280	190	120	110		PROHIBITED AREA OF CRANE OPERATIONS

1 Part line - 2,100 lbs | 2 Part line - 4,100 lbs | 3 Part line - 5,000 lbs | 4 Part line - 6,450 lbs






## WORKING RADIUS



ASME/B-30.5 Compliant  
URW295 Spec Sheet - Sept 2015



# SPECIFICATIONS

	URW295CURS & URW295CURS/P	URW295CUMRS & URW295CUMRS/P	URW295CUBRS	URW295C1URS	URW295C1UMRS
Engine / Motor					
Engine Manufacturer:	Mitsubishi (Gas)	Mitsubishi (Gas)	DC	Kubota	Kubota (Diesel)
Maximum Output:	Gasoline - 13HP Propane - 11.7HP	Gasoline - 13HP Propane - 11.7HP Electric - 5HP/220V (Single Phase)	48V Battery 110V Electric	7.2kw	Diesel- 7.2kw Electric - 5HP/220V (Single Phase)
Tank Capacity:	1.85 gal	1.85 gal		1.85 gal	1.85 gal
Starting Method	Electric and Recoil Start as Standard		N/A	Electric Start	
Crane Capacity	6,450 lbs @4.6ft				
Max Working Radius	1.4 - 28.0 ft				
Tip Height	31 ft (37 ft with Jib)				
Turning Radius	Turns within its dimensions				
Dimensions when Folded (ft.)	2.0 x 4.6 x 9.0 (W x H x L)			2.0 x 4.6 x 9.1 (W x H x L)	2.0 x 4.6 x 9.0 (W x H x L)
Weight	4,200 lbs	4,380 lbs	4,360 lbs	4,245 lbs	4,525 lbs
Outrigger Point Loading	152.2 psi on standard outrigger pads (7" x 4.5") (Specific point landing available upon request)				
Winch Speed	Capacity: 2,250 lbs. at 4th layer   Single-Line				
	131 ft/min at 4th layer	131 ft/min at 4th layer Electric: 89 ft/min at 4th layer	131 ft/min at 4th layer	131 ft/min at 4th layer	131 ft/min at 4th layer Electric: 89 ft/min at 4th layer
Telescopic System	Boom Length: 8.3 ft (retracted) to 28.4 ft (extended) Boom Type: 5-Section hydraulically telescoping boom, with hexagonal box construction				
Telescoping Speed	20 ft / 20 seconds				
Boom Lift Speed	0° – 78° / 11 sec	Gas: 0° – 78° / 11 sec Electric: 0° – 78° / 15 sec	0° – 78° / 15 sec	0° – 78° / 11 sec	Diesel: 0° – 78° / 11 sec Electric: 0° – 78° / 15 sec
Traction System	Travel Speed: 0-1.43 mph				
	Gradability: 20 °				
	Track Ground Pressure: 6.96 psi				
Accessories & Options	<ul style="list-style-type: none"><li>• SPYDERWEB 5-Axis fixed Glass Manipulator - Attaches directly to boom for rigid application</li><li>• 6 ft offsettable Jib with Searcher Hook and Single-Line Swivel Ball</li><li>• Custom SPYDERCRANE Trailer - Includes Track Mats, Tool Box, Outrigger Pads and Fuel Containers</li></ul>		<ul style="list-style-type: none"><li>• Auxilliary Winch Kit - 2,000 lb Single-Line Pull, 330 ft., 5/16" Wire Rope, 90 FPM</li><li>• MYLAR Non-Marking Tracks</li><li>• Single-Part Reeving and Two-Part Reeving capability</li></ul>		

**UNIC  
SPYDERCRANE®**

Visit us on the web at  
**SPYDERCRANE.COM**

A Division of



5326 W. Mohave St | Phoenix, AZ 85043

**844.264.8994**

Product specifications are subject to change without notice. No specific training or license is required to operate the SPYDERCRANE in most areas, but operators are responsible for knowing and meeting all safety requirements and regulations.

**NESS CAMPBELL**  
CRANE + RIGGING

PORTLAND OFFICE: 503.283.3111  
SEATTLE OFFICE: 206.784.1054  
**WWW.NESSCAMPBELL.COM**