

TWINLIFT 80,000 LBS

TWINLIFT TWL040

REACH UP:
32.5 FT

REACH OUT:
19 FT

ATTACHMENTS:
FORKS, JIB, WINCH



NOTES:

STANDARD EQUIPMENT

ENGINE:

GM Industrial 4.3L Propane Engine
105HP
U.S. EPA Tier 3
CARB Tier 3
EU Stage III

CONTROL SYSTEM:

CARL (Computer Assisted Remote Lifting) Control System. Monitors Boom Angle, Boom Extension, Counterweight Extension, Pressure, Counterweight Load Pin. Automatic Shutdown for overload conditions. Large easy to read display screen with push button navigation and dial adjustment.

CONTROLS:

Separate controls for each function. Combination of foot pedal, joystick, and push button controls allows for multiple functions to be performed at the same time.

DRIVE:

Brevini drive motors (qty. 3)
(2) in front, (1) in rear steering box.

WHEELS:

Front: qty. (4)
Diameter: 28"
Width: 10"

Rear: qty. (2)
Diameter: 28"
Width: 10"

Replaceable polyurethane composition

STEERING:

90 degree steering of rear wheels.

OSCILLATING REAR STEERING BOX:

Keeps all steering wheels in contact with ground.

GRADABILITY:

Unloaded maximum grade is 17%
Loaded maximum grade is 3.5%

GROUND BEARING PRESSURE:

Loaded Front Tires: 780 psi maximum
Unloaded Rear Tires: 660 psi maximum

TELESCOPING COUNTERWEIGHT:

Standard counterweight section telescopes 5' using (2) hydraulic cylinders. Push button control.

HYDRAULIC RESERVOIR:

100 gallons (378 liters)

BOOM LIFT CYLINDERS:

Twin cylinders capable of lifting and lowering with a full load. Safety holding valves installed on both cylinders. Spherical bearings ensure constant alignment with the boom.

BOOM TELESCOPE CYLINDERS:

Twin cylinders capable of telescoping the boom in and out with a full load. Safety holding valves are installed on both cylinders.

LIFTING EYES:

Qty. (1) centrally located on boom with 40 ton capacity

Qty. (2) located on corners of boom with 20 ton capacity each

WINCH MOUNT:

Standard mount for optional winch

WEIGHT:

36,000 lbs.

Standard "A" counterweight included

COUNTERWEIGHTS:

"A" - non-removable counterweight installed in unit

"B" - qty. (2) - 4,850 lbs each. - 9,700 lbs total

"C" - qty. (1) - 8,500 lbs

TIE DOWN / LIFTING EYES:

Tie down / lifting eyes installed for securing unit during transport and for lifting of the unit.

DRIVER PROTECTION GUARD:

Structural overhead guard for operator protection.

OTHER STANDARD FEATURES:

Back up alarm, horn, strobe light, operator seat complete with safety belt and electric switch.

OPTIONAL EQUIPMENT

RADIO REMOTE CONTROL:

Radio remote control allows full machine functionality from a wireless radio remote. Allows operator optimal view of load. Emergency safety shutdown switch is standard.

HYDRAULIC WINCH:

Consult factory for available capacities

FORKLIFT ATTACHMENT:

Consult factory for available capacities

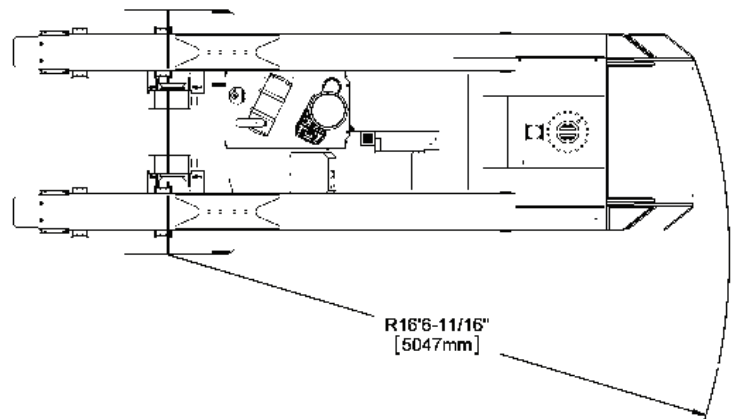
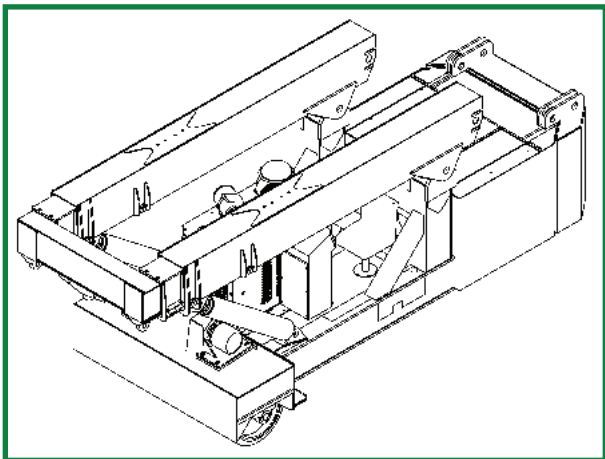
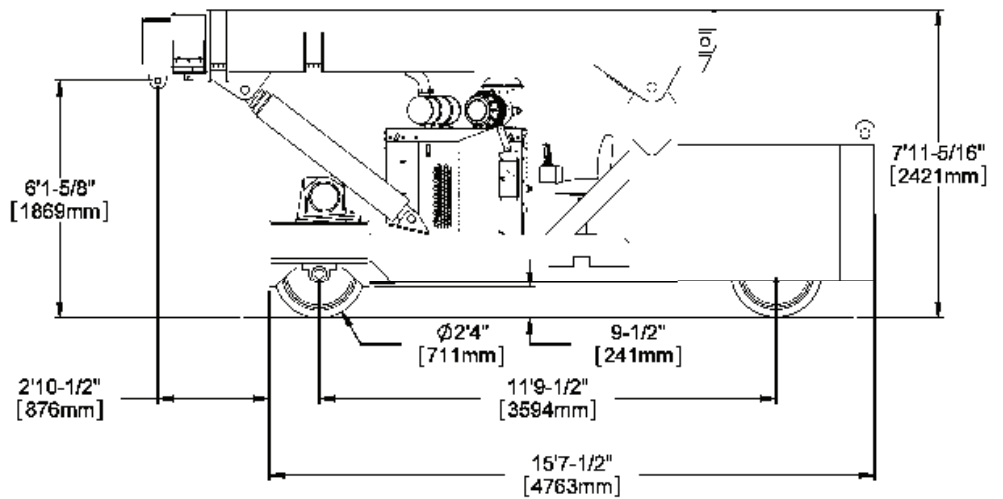
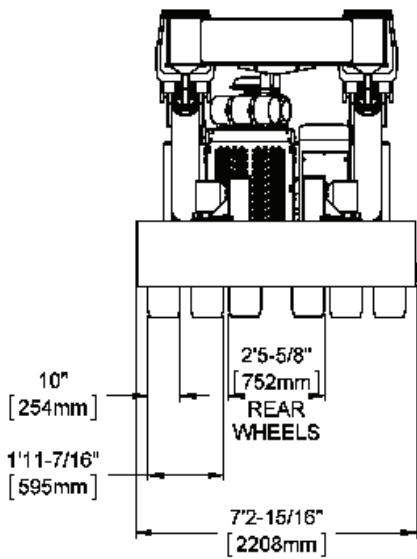
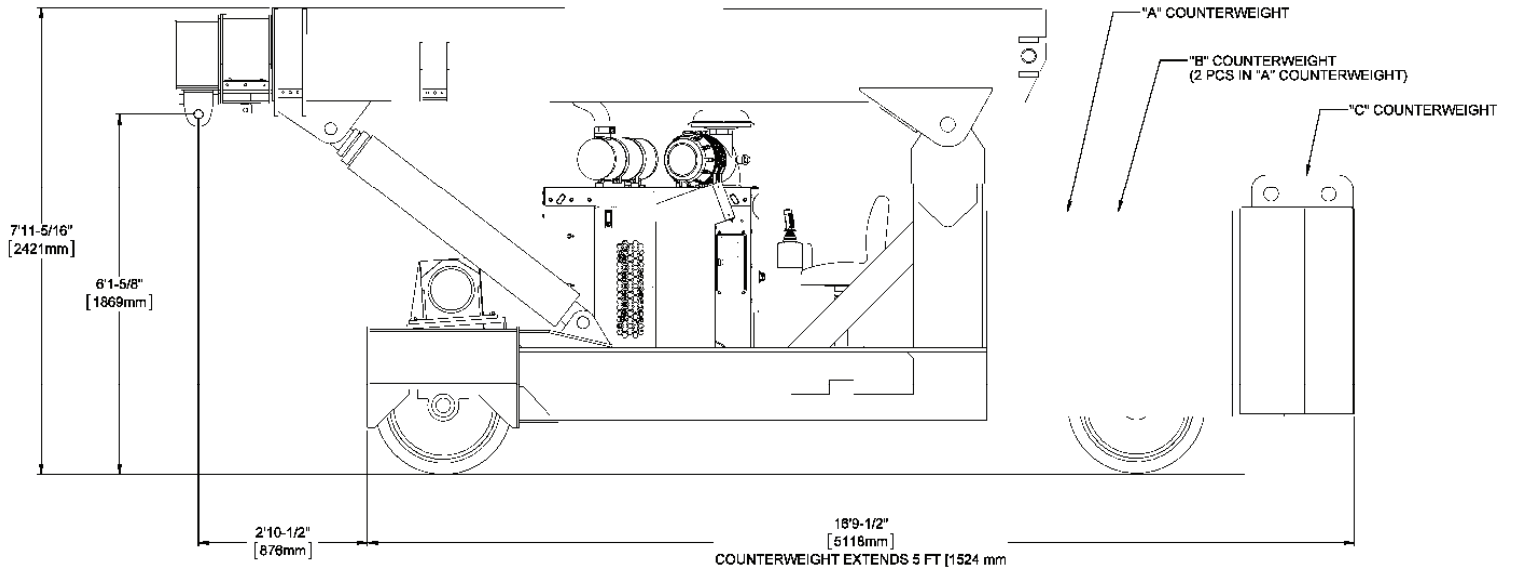
JIB EXTENSION:

Consult factory for available capacities



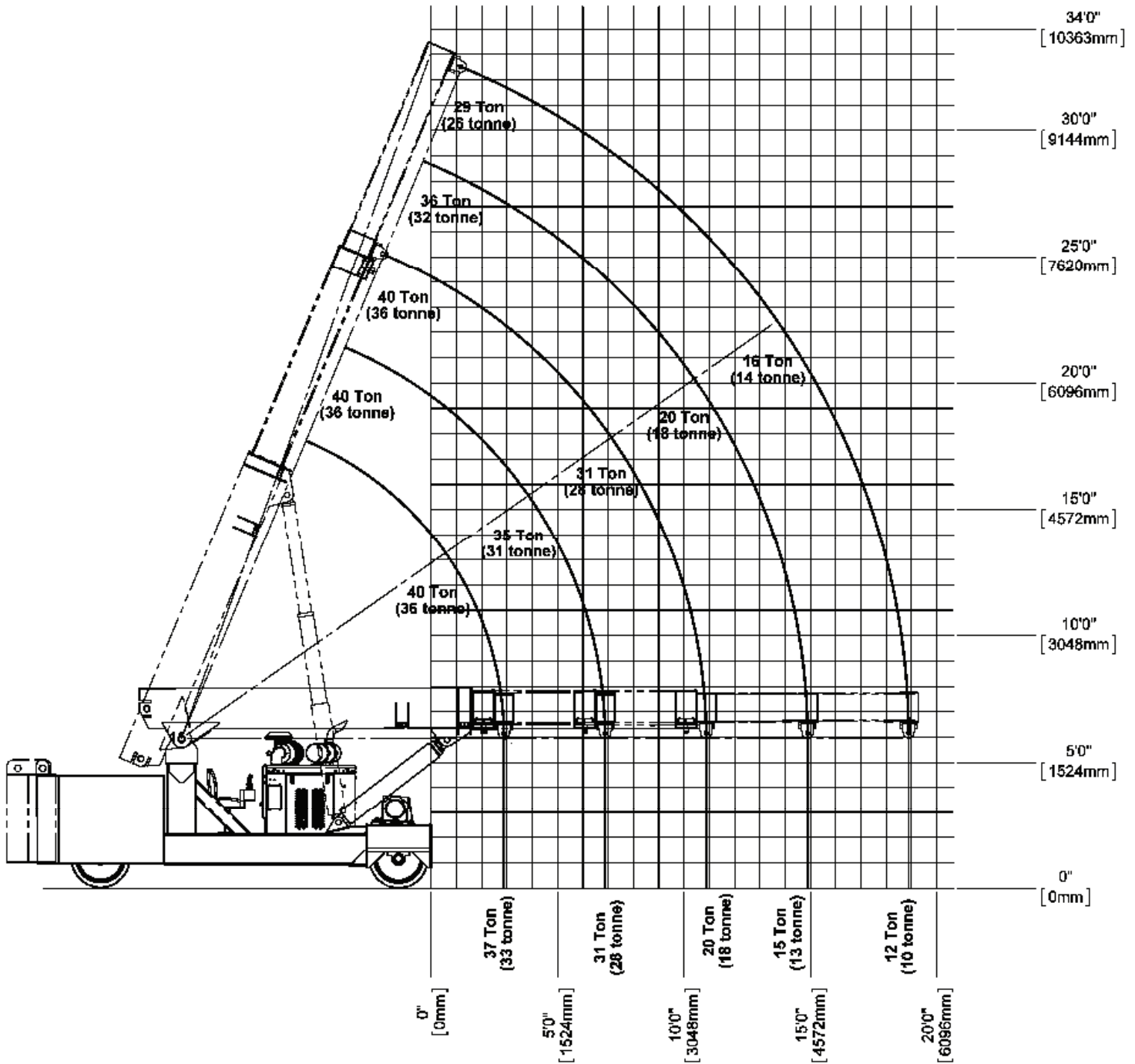
PORTLAND OFFICE: 503.283.3111
SEATTLE OFFICE: 206.784.1054
WWW.NESSCAMPBELL.COM

DIMENSIONAL DATA



PORTLAND OFFICE: 503.283.3111
SEATTLE OFFICE: 206.784.1054
WWW.NESSCAMPBELL.COM

REFERENCE CAPACITY / RANGE DIAGRAM



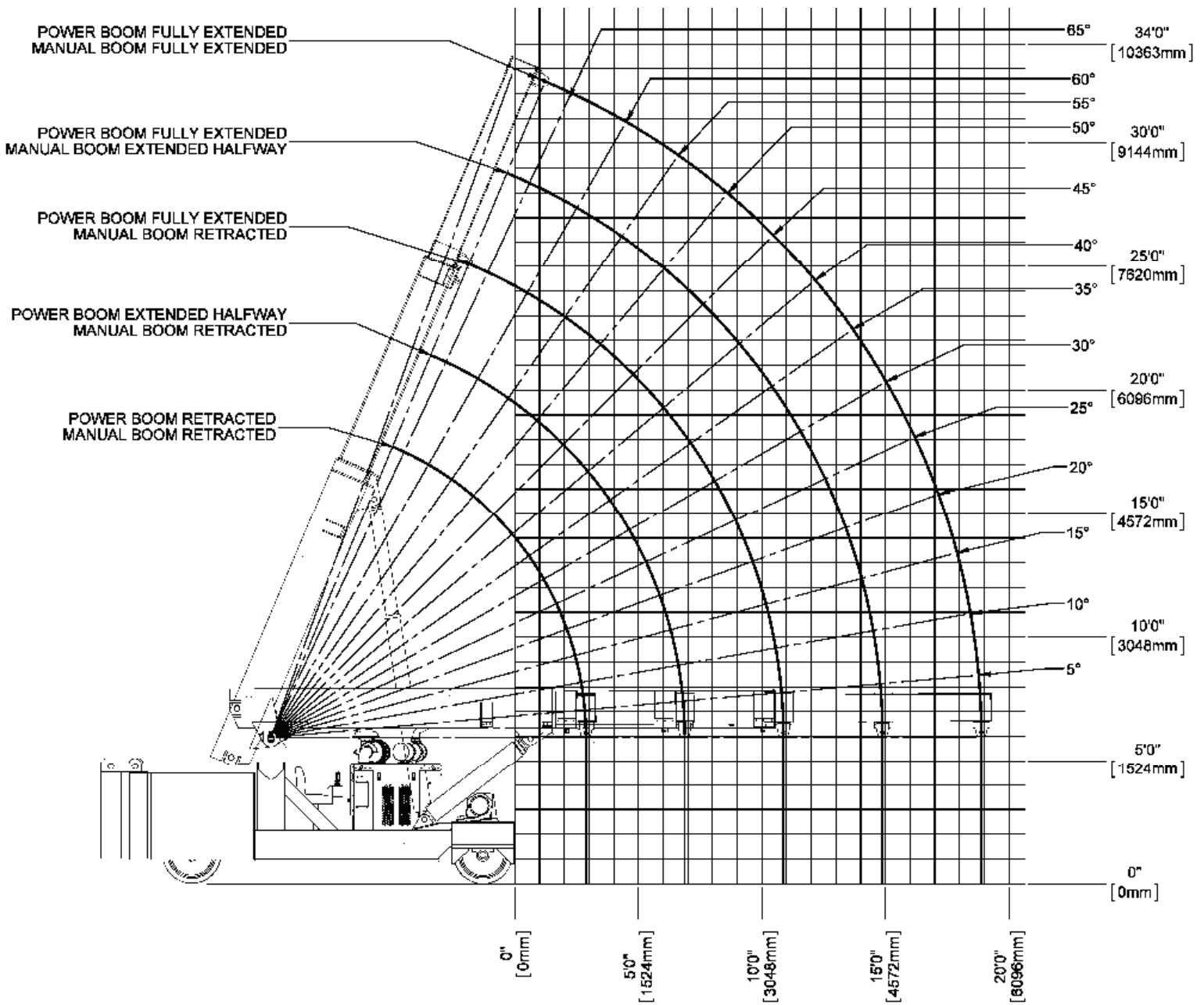
NOTE

1. The above chart is for reference purposes only.
2. Never use the above chart for lift planning calculations
3. Lift plan calculations are to be determined solely by the load charts and range diagrams that are issued for the specific serial numbered machine that is to be used for the specific planned lift.



PORTLAND OFFICE: 503.283.3111
 SEATTLE OFFICE: 206.784.1054
WWW.NESSCAMPBELL.COM

RANGE DIAGRAM



NOTE

1. The above chart is for reference purposes only.
2. Never use the above chart for lift planning calculations
3. Lift plan calculations are to be determined solely by the load charts and range diagrams that are issued for the specific serial numbered machine that is to be used for the specific planned lift.



PORTLAND OFFICE: 503.283.3111
 SEATTLE OFFICE: 206.784.1054
WWW.NESSCAMPBELL.COM

LOAD CHARTS FOR "A" COUNTERWEIGHT

LOAD RADIUS (FEET FROM FRONT)	40 TON LOW PROFILE TWINLIFT LOAD CHART														TLLC116 7/25/2019
	FOR USE WITH LIFTING EYE ONLY STANDARD NON-REMOVABLE "A" COUNTERWEIGHT														
	FULLY EXTENDED							FULLY RETRACTED							
LOADED BOOM ANGLE	BOOM LENGTH (FEET)						LOADED BOOM ANGLE	BOOM LENGTH (FEET)						FLY SECTION SEE NOTES	
▲	13	17	21	25	29	FLY SECTION SEE NOTES	▲	13	17	21	25	29	FLY SECTION SEE NOTES		
0	42	80,000	55	80,000	60	80,000	42	80,000	55	80,000	60	80,000	FLY SECTION SEE NOTES		
1	35	80,000	51	80,000	60	80,000	35	80,000	51	80,000	60	79,900	FLY SECTION SEE NOTES		
2	28	78,400	47	78,200	56	78,000	28	84,100	47	82,800	56	82,100	FLY SECTION SEE NOTES		
3	13	83,300	42	82,200	53	81,600	13	48,400	42	47,400	53	46,700	FLY SECTION SEE NOTES		
4			36	48,800	49	48,200	57	50,100	36	37,700	49	37,200	57	38,000	
5			30	41,300	48	40,800	54	41,600	30	31,200	48	30,700	54	31,400	
6			23	35,200	42	34,700	51	35,400	23	26,400	42	25,900	51	26,700	
7			11	30,500	38	30,000	48	30,700	11	22,900	38	22,400	48	23,000	
8					33	28,400	45	27,000	33	19,500	45	20,200	53	20,600	
9					27	23,500	42	24,100	27	17,300	42	17,900	50	18,300	
10	SEE NOTE "E"				21	21,100	38	21,600	21	15,400	38	16,000	47	16,400	
11					10	19,100	34	19,600	10	13,900	34	14,400	45	14,800	
12					30	17,900	42	18,200			30	13,100	42	13,500	
13					25	16,400	39	16,700			25	11,900	39	12,300	
14					19	15,100	35	15,400			19	10,900	35	11,300	
15					10	13,900	32	14,300			10	10,000	32	10,400	
16							28	13,300					28	9,600	
17							23	12,400					23	8,900	
18							17	11,600					17	8,300	
19							9	10,800					9	7,700	

LOAD CHARTS FOR "A" AND "B" COUNTERWEIGHT

LOAD RADIUS (FEET FROM FRONT)	40 TON LOW PROFILE TWINLIFT LOAD CHART														TLLC117 7/25/2019
	FOR USE WITH LIFTING EYE ONLY STANDARD NON-REMOVABLE "A" COUNTERWEIGHT WITH "B" COUNTERWEIGHT IT ADDED														
	FULLY EXTENDED							FULLY RETRACTED							
LOADED BOOM ANGLE	BOOM LENGTH (FEET)						LOADED BOOM ANGLE	BOOM LENGTH (FEET)						FLY SECTION SEE NOTES	
▲	13	17	21	25	29	FLY SECTION SEE NOTES	▲	13	17	21	25	29	FLY SECTION SEE NOTES		
0	42	80,000	55	80,000	60	80,000	42	80,000	55	80,000	60	80,000	FLY SECTION SEE NOTES		
1	35	80,000	51	80,000	60	80,000	35	79,900	51	79,900	60	79,400	FLY SECTION SEE NOTES		
2	28	78,100	47	77,800	56	77,700	28	74,200	47	73,900	56	73,700	FLY SECTION SEE NOTES		
3	13	74,100	42	73,800	53	73,700	13	68,900	42	67,900	53	67,200	FLY SECTION SEE NOTES		
4			36	70,200	49	70,100	57	68,300	36	64,300	49	63,800	57	64,600	
5			30	61,900	48	61,300	54	62,100	30	45,100	48	44,800	54	45,400	
6			23	52,900	42	52,400	51	53,100	23	36,500	42	36,000	51	36,700	
7			11	46,100	38	45,600	48	46,300	11	33,400	38	32,900	48	33,600	
8					33	40,300	45	40,900	33	29,000	45	29,600	53	30,100	
9					27	35,000	42	36,600	27	25,800	42	26,400	50	26,800	
10	SEE NOTE "E"				21	32,500	38	33,100	21	23,200	38	23,800	47	24,200	
11					10	29,600	34	30,100	10	21,000	34	21,600	45	22,000	
12					30	27,600	42	28,000			30	18,700	42	20,100	
13					25	25,400	39	25,800			25	18,100	39	18,400	
14					19	23,500	35	23,900			19	16,700	35	17,000	
15					10	21,900	32	22,200			10	15,400	32	15,800	
16							26	20,800					26	14,700	
17							23	19,400					23	13,700	
18							17	18,300					17	12,600	
19							9	17,200					9	12,000	

NOTE: Specifications are provided in imperial dimensions. All equipment dimensions, designs, specifications, calculations, etc., as described, are subject to change at manufacturer's discretion at any time and without notice. Weights are approximate and may vary. Data herein is for informational purposes only and will not be construed to guarantee suitability of equipment for any particular as performance may vary with conditions encountered. Warranty will apply as written in standard contract form upon purchase of equipment. Capacities are for reference only and must not be used for any serial numbered machine. Serial numbered load charts may be obtained from Lift Systems, Inc.



PORTLAND OFFICE: 503.283.3111
SEATTLE OFFICE: 206.784.1054
WWW.NESSCAMPBELL.COM

LOAD CHARTS FOR "A", "B", AND "C" COUNTERWEIGHT

LOAD RADIUS (FEET FROM FRONT)	40 TON LOW PROFILE TWINLIFT LOAD CHART																		TLLC118	
	FOR USE WITH LIFTING EYE ONLY STANDARD NON-REMOVABLE 'A' COUNTERWEIGHT WITH 'B', 'C' COUNTERWEIGHT ADDED																		7/27/2009	
	FULLY EXTENDED									FULLY RETRACTED										
LOWER BOOM ANGLE	BOOM LENGTH (FEET)									LOWER BOOM ANGLE	BOOM LENGTH (FEET)									
▲	13	17	21	25	29	▲	13	17	21	25	29	▲	13	17	21	25	29			
0	42	80,000	55	80,000	60	80,000	42	80,000	55	80,000	60	80,000	42	80,000	55	80,000	60	80,000		
1	35	80,000	51	80,000	56	80,000	35	80,000	51	80,000	56	80,000	35	80,000	51	80,000	56	80,000		
2	28	79,400	47	78,100	52	78,000	28	75,600	47	75,900	52	75,400	28	70,900	47	70,500	52	70,200		
3	13	75,300	42	75,100	47	74,900	13	70,900	42	70,500	47	70,200	13	66,000	42	65,600	47	65,100		
4			36	71,400	41	71,200			36	66,000	41	65,700			30	61,500	35	61,000		
5			30	66,000	35	65,900			30	61,500	35	61,000			23	52,600	28	52,500		
6			23	55,000	28	54,900			23	52,600	28	52,500			11	45,800	16	45,700		
7			11	42,200	16	42,000			11	40,100	16	39,900			9	35,400	14	35,300		
8				33	55,300	38	55,900			33	52,300	38	52,900			27	48,500	32	48,400	
9				27	48,500	32	48,100			27	45,500	32	45,100			21	44,800	26	44,700	
10	SEE NOTE 'E'			21	44,800	26	44,400			21	41,800	26	41,400			10	40,900	15	40,800	
11				10	40,900	15	40,400			10	38,000	15	37,400			9	35,000	14	34,400	
12					30	38,000	35	38,400			25	35,100	30	35,500			19	32,600	24	33,000
13					25	35,100	30	35,500			19	32,600	24	33,000			10	30,400	15	30,800
14					19	32,600	24	33,000												
15					10	30,400	15	30,800												
16						28	28,800													
17						23	27,000													
18						17	25,500													
19						9	24,100													

NOTE:
Specifications are provided in imperial dimensions. All equipment dimensions, designs, specifications, calculations, etc., as described, are subject to change at manufacturer's discretion at any time and without notice. Weights are approximate and may vary. Data herein is for informational purposes only and will not be construed to guarantee suitability of equipment for any particular as performance may vary with conditions encountered. Warranty will apply as written in standard contract form upon purchase of equipment. Capacities are for reference only and must not be used for any serial numbered machine. Serial numbered load charts may be obtained from Lift Systems, Inc.



PORTLAND OFFICE: 503.283.3111
SEATTLE OFFICE: 206.784.1054
WWW.NESSCAMPBELL.COM